

SOCIETY FOR INTEGRATIVE & COMPARATIVE BIOLOGY
Executive Committee Meeting Minutes
3 and 7 January 2010
Seattle Sheraton Hotel
Seattle, Washington

Executive Committee Members Present, 3 Jan 2010:

President – Richard Satterlie
President-Elect – Ken Sebens
Past President – John Pearse
Secretary – Lou Burnett
Program Officer – Eduardo Rosa-Molinar
Program Officer-Elect – Brian Tsukimura
Treasurer – Ron Dimock
Treasurer-Elect – Bob Roer
Member-at-Large – Rachel Merz
Member-at-Large – Jackie Webb
Member-at-Large – Adam Summers

Divisional Chairs

DAB – Marilyn Ramenofsky (Incoming Chair) for Tom Hahn
DCB – Robert Full
DCE – Mark Sheridan (Chair-Elect) for Stacia Sower
DCPB – Joe Williams
DDCB – Scott Gilbert (DDCB Program Officer) for Karen Crawford
DEDB – Linda Holland
DEE – Michelle Nishiguchi
DIZ – Dianna Padilla
DNB – James Murray, not present
DSEB – Anne Maglia
DVM – Mark Westneat
Editor-in-Chief, ICB – Harold Heatwole
Student Postdoctoral Affairs Committee Chair – Larry Riley
Educational Council Chair – Bob Podolsky
Executive Director (*ex officio*) – Brett Burk

Others present:

Tom Daniel – Chair, Development Committee
Peter deFur – Chair, Public Affairs Committee
Lara Ferry-Graham – Secretary-Elect, DVM
Patrick O'Connor – Chair-Elect DSEB
Ian Sherman – Oxford University Press
Sharon Swartz – Chair-Elect, DCB
Art Woods – Chair-Elect, DEE

1. **Call to Order.** The meeting was called to order at 2:30 p.m. by President Richard Satterlie. President Satterlie welcomed and introduced members of the Executive Committee and guests. **Motion to suspend the rules for substitutes for divisional chairs.**
It was moved and seconded that the rules be suspended to allow substitutes for divisional chairs who could not be present and where divisional bylaws have no provisions for substitution.
The motion was approved by acclamation.
2. **Approval of minutes of the 2009 Executive Committee Meeting**
The minutes of the 2009 Executive Committee meetings were approved as submitted.
3. **Officer Reports.**
 - a. Program Officer – Ed Rosa-Molinar (**Program Officer Report**, [Appendix 3.PO.a](#))
 1. The highlights of the meeting schedule for the week were reviewed.
 2. Late-breaking symposium status and funding were discussed.
 3. Advertising options for symposium sponsors were discussed.
 4. A meeting registration report was presented by Brett Burk ([Appendix 3.PO.b](#)).
 - b. Secretary – Lou Burnett (**Secretary Report**, [Appendix 3.Secy.a](#))
 1. Members were reminded to refer to the SICB calendar (go to Resources > Calendar; <http://www.sicb.org/resources/calendar.php3>) for important SICB events throughout the year.
 2. The SICB Newsletter underwent a major change in format during the past year from html to Adobe Acrobat.
 3. Newsletter schedule for 2010 is as follows.
 - a. Spring 2010
 1. Mar 4 - submission due
 2. Mar 26 - review on-line draft
 3. Apr 6 - corrections due
 4. Apr 12 - newsletter goes on-line
 - b. Fall 2010
 1. Oct 8 - submission due
 2. Oct 27 - review on-line draft
 3. Nov 3 - corrections due
 4. Nov 9 - newsletter goes online
 4. Spring elections.
 - a. The election schedule for the spring was reviewed ([Appendix 3.Secy.b](#) for SICB-wide and divisional elections). The full election schedule is online: go to Resources > Elections > Election Schedule for SICB and Divisions or <http://www.sicb.org/resources/electionschedule.php3>.
 - b. All nominating committees should be appointed in the fall; this has been placed on the SICB calendar.
 - c. Archived candidate lists are now online; go to Resources > Elections > Election Candidates for SICB and Divisions or <http://www.sicb.org/resources/electioncandidates.php3>. Revisions and corrections to this list should be submitted to the Secretary.

5. New surveying tools have provided the Executive Committee with more effective mechanisms for communicating.
6. SICB Member Updates, published approximately monthly, were established in 2009 to provide members with updates on significant activities of the society.
7. Some of the results of the SICB Member Survey were summarized – [Appendix 3.Secy.c.](#)
8. The SICB Constitution and Bylaws Revisions passed last spring were summarized as follows.
 - a. Committee on Broadening Participation was established.
 - b. Composition of the ICB Editorial Board was amended to include Associate members of the board.
9. Divisional Best Student Paper awards.
 - a. Best Student Paper procedures for identifying judges and assigning presentations – [Appendix 3.Secy.d.](#)
 - b. **Divisional Secretaries** have been asked to report the results of Best Student Paper and Poster awards to the SICB Secretary **within 2 weeks** after the annual meeting for posting on the SICB web site and notification of winners.
 - c. New procedures for processing certificates and checks were reviewed. A signature sheet for Divisional Chairs was circulated; these signatures will be placed on the BSP certificates.
10. **SICB Bylaws Proposal** – [Appendix 3.Secy.e.](#)

Motion.

Dimock moved (Roer seconded) that the proposed bylaw (see [Appendix 3.Secy.e.](#)) (insert new article as Article XVI and rename Article XVI to Article XVII) to govern best student presentation awards at the annual meeting be submitted to the membership for approval. SICB Bylaws allow proposed amendments to be generated by the Executive Committee. *After discussion of specific provisions in the proposed amendment, further discussion was tabled until the second Executive Committee meeting on Jan 7, 2010 to allow adjustments in the wording.*

4. **Special Report.** (taken out of order to accommodate participant schedules)
 Brian Tsukimura, Program Officer-Elect, gave an overview of the Grand Challenges Workshop, to take place at the annual meeting. Bill Zamer of the National Sciences Foundation was introduced. Zamer complemented and congratulated the SICB on its significant progress in organizing a movement to document the research needs of organismal biology through its discussions, its articles in the SICB journal *Integrative and Comparative Biology*, and the upcoming Grand Challenges Workshop. He congratulated the SICB Executive Committee on galvanizing the discussion of organismal biology throughout the biological community. Zamer noted that SICB has made traction in terms of interest nationally in a citation by the National Research Council report entitled “A New Biology for the 21st Century: Ensuring the United States Leads the Coming Biology Revolution.” He noted that the SICB has identified areas of importance in the Grand Challenges and that the next steps will be to translate this into sets of specific questions that could map resources and infrastructure to allow pursuit of the Grand Challenges. In particular, he highlighted Grand

Challenge number 5 (Schwenk et al., 2009, *ICB* 49:7-14), “Understanding how organisms walk the tightrope between stability and change,” as one that had “intellectual resonance” at the National Science Foundation.

3. Officer Reports (continued)

c. Treasurer – Ron Dimock (Treasurer Report)

1. An annual report was presented. ([Appendix 3.Treas.a](#))
2. An executive summary of investments was presented ([Appendix 3.Treas.b](#)).
3. A proposed budget for 2010 was presented. The treasurer noted that the budget figures for some committees were blank and that meetings with the committees before the second Executive Committee meeting should complete the budget process. The revised budget will be presented at the second Executive Committee meeting on Jan 7, 2010.
4. An annual evaluation of Burk & Associates, Inc. and the Executive Officers by the Executive Committee will be conducted using an electronic survey mechanism as was done last year.

5. Committee Reports.

a. Standing Committee Reports (order as listed in the SICB Bylaws)

1. Advisory – John Pearse; no report.
2. Educational Council – Bob Podolsky, please see [Appendix 5, Educational Council Report](#).
3. Membership – Sally Woodin; no report.
4. Nominating – no report; the committee is meeting in Seattle.
5. Editorial Board, *ICB* – Hal Heatwole, *ICB* Editor reported on some of the journal statistics ([Appendix 5, ICB Report](#)). A question was raised about publishing non-symposium articles in the journal. Heatwole indicated that, in general, this concept has not been supported by the editorial board. Brett Burk introduced Ian Sherman, Oxford University Press, serving as the OUP liaison to the journal since April 2009. Oxford University Press has provided the Executive Committee with a thorough publisher’s report, which was included in the packet of materials.
6. Student/Postdoctoral Affairs – Larry Riley; no report.
7. Student Support – Sheila Patek, please see [Appendix 5, Student Support Committee Report](#).
8. Finance Committee – Ron Dimock
 - a. **Motion.** The Finance Committee moves to establish the Carl Gans Award (requires no second). See [Appendix 5.Finance.a, Gans Award](#). *The motion passed by acclamation.*
 - b. **Motion.** The Finance Committee moves to establish the Howard Bern Lecture Fund (requires no second). See [Appendix 5.Finance.b, Howard Bern Lecture Fund](#). This motion establishes the fund in order to receive donations (similar to the Gans Fund approval by the Executive Committee in January 2009). *The motion passed by acclamation.*
9. Public Affairs – Peter deFur, please see [Appendix 5, Public Affairs Committee Report](#).
10. Program – Rosa-Molinar (included in Program Officer Report)

11. Development – Tom Daniel, please see [Appendix 5, Development Committee Report](#).

ADJOURNMENT OF FIRST MEETING

Executive Committee Members Present, 7 Jan 2010:

President – Richard Satterlie
President-Elect – Ken Sebens
Past President – John Pearse
Secretary – Lou Burnett
Program Officer – Eduardo Rosa-Molinar
Program Officer-Elect – Brian Tsukimura
Treasurer – Ron Dimock
Treasurer-Elect – Bob Roer
Member-at-Large – Rachel Merz
Member-at-Large – Jackie Webb
Member-at-Large – Adam Summers

Divisional Chairs

DAB – Marilyn Ramenofsky (Incoming Chair) for Tom Hahn
DCB – Robert Full
DCE – Stacia Sower
DCPB – Joe Williams
DDCB – Karen Crawford, not present
DEDB – Linda Holland
DEE – Art Woods for Michelle Nishiguchi
DIZ – Dianna Padilla
DNB – James Murray
DSEB – Patrick O'Connor for Anne Maglia
DVM – Mark Westneat
Editor-in-Chief, ICB – Harold Heatwole
Student Postdoctoral Affairs Committee Chair – Larry Riley
Educational Council Chair – Bob Podolsky
Executive Director (*ex officio*) – Brett Burk

Others present:

Ruedi Birenheide – SICB Webmaster
Chuck Booth – Chair, ICB Review Committee
Mark Sheridan – Chair-Elect, DCE
Ian Sherman – Oxford University Press
Eric Tytell – Public Affairs Committee
Cheryl Wilga – Chair, Committee on Broadening Participation

6. Divisional Reports. (Appendix 7)

1. [Animal Behavior](#)
2. Comparative Biomechanics
3. [Comparative Endocrinology](#)
4. [Comparative Physiology & Biochemistry](#)
5. Developmental & Cell Biology
6. Ecology & Evolution
7. [Evolutionary Developmental Biology](#)
8. Invertebrate Zoology
9. Neurobiology
10. [Systematic & Evolutionary Biology](#)
11. [Vertebrate Morphology](#)

7. New Business

- a. ICB Journal Review Report.** Chuck Booth, Chair, Review Team [ICB Journal Review Report](#)

In 2008 President John Pearse, in consultation with the Executive Committee, appointed an *ad hoc* committee to review the journal and its operations. Committee members: Chuck Booth (Chair), Richard Blob, Linda Walters, John Wingfield, Sally Woodin. The time-line, activities of the committee and the conclusions are included in detail in the report.

- b. ICB Journal Update.** Harold Heatwole, ICB Editor, reported further on journal issues with information resulting from the editorial board meeting.

Comment Papers. Decided to publish “comment” papers with the following provisions:

1. comments must be backed up by data and citations.
2. must be a word limit on comment papers; but didn't decide on what the limit will be.
3. editor will carefully edit out any accusatory or abusive language.

The author will see the comment paper before it is published and be given a chance for rebuttal; commentor will see the rebuttal; both comment and rebuttal will appear in the same issue.

Papers on Grand Challenges. These will be encouraged from sibling societies.

Other Issues. The editorial board also discussed some issues associated with page charges and the length of manuscripts. There was discussion on expanding ICB to accept unsolicited papers; the consensus was that the standing we now hold is strong and based on publishing only collections of symposia. It was decided to solicit testimonials from influential persons in the 2010 application to Pub Med. ICB has been ranked ninth in the world among 125 journals with zoological content.

- c. SICB Webmaster Report.** SICB Webmaster Ruedi Birenheide reported on SICB web activity – 7 million “hits” with 256,000 visits over the past year are similar to the year before; 106.8 GB bandwidth is much larger than previously indicating that people are downloading more and/or larger files from the web site; numbers for newsletter accesses are in agreement with the results from the SICB member survey indicating good readership of the newsletter; over the last year web tools were

developed for the Best Student Presentations to allow judges to sign up for papers and posters to judge; mechanisms have also been put into place to allow divisions to collect the scores of the judges on student presentations – not all divisions are making use of this feature.

- d. Educational Council update – the council met during the Seattle meeting and council chair Bob Podolsky reported on the discussion
 1. there was strong support for an annual teaching and learning workshop; timing of workshop was discussed with the afternoon of arrival as a possibility; it was not resolved how the event might be supported; the idea of focusing next year on a theme of teaching/educational aspects of the Grand Challenges was discussed; this is consistent with the discussion in the Grand Challenge Workshop (held at the Seattle meeting) where the theme of teaching was a prominent issue.
 2. there was discussion on the inclusion of educational goals in symposia; the committee wishes to “go light” on this – consider a two step process; one step would be to encourage symposium proposers to consider and to describe in their proposals how educational issues might fit into their symposia; a second step might be to contact symposium organizers after proposals are approved to encourage them to contact their presenters and get them to think how “broader impacts” on their NSF proposal might be satisfied by having an educational component in the symposium.
 3. there was consideration of having a display of undergraduate posters on the day of arrival; undergraduate students would put up posters where they would be seen, perhaps in registration area, but would not be expected to stand by them; their posters would also be presented as usual in the the regular poster sessions. The goal would be to highlight contributions of undergraduates while encouraging them to meet one another early in the meeting and in a professional context.
 4. SICB Digital Library (DL) – not much progress was made; there is the hope that the workshop series and symposium efforts will help to build the digital library
 - a. Satterlie challenged the Executive Committee to contribute to DL; Podolsky stated that what is needed in the DL is structure, section editors and content; Padilla indicated an interest in DIZ to make resources for teaching invertebrate zoology available through the DIZ section of the SICB web site; Merz pointed out the one of the original concepts of the DL was that the materials in the DL would be peer-reviewed and of sufficient quality that submitters could “get credit” for their efforts; Burnett reminded the group that there could be copyright issues associated with the DL; Podolsky maintained that there are benefits to keeping this kind of thing centralized, because the use of materials should be encouraged across the society and the DL already has web staffing and a submission mechanism in place.
 5. there was discussion of creating a web page at the SICB website that lists links to web pages for courses taught by society members, organized by discipline

6. there was discussion of initiating a “meal with biologist program” at the annual meeting. The idea is for faculty to sign up to be available for certain meals, and for students to sign up for those times with faculty. All participants would pay their own way.

Further discussion on point #3: Williams pointed out that there was concern in DCPB that undergraduates not be isolated or grouped (as undergraduates) in poster sessions; their status as undergraduates should be highlighted; the concern was stigmatizing undergraduates as “second class” citizens. Podolsky reassured the group that there has never been an intention to create an undergraduate poster session. Posters would simply be on display at the start of the meeting but also included as usual in the regular poster sessions.

7. **Best Student Presentation Bylaws Amendment.** The consideration of the bylaws amendment proposed and tabled at the 3 Jan 2010 meeting was placed on the table. The original amendment was modified and appears in the appendix ([Appendix 3.Secy.e](#)).

After brief discussion, the original motion to place this proposal on the ballot for approval by the SICB membership was passed by acclamation.

- e. **Program Officer Update on Meeting Registration.**

Program Officer Ed Rosa-Molinar reported on meeting registrations. ([Appendix 3.PO.c](#)).

- f. **Annual Meeting Revenue Through Advertising.** (Refer to [Appendix 3.PO.a](#)) Program Officer Rosa-Molinar presented several new options for generating revenue to support the annual meeting using advertising with the goal of raising \$100,000 each year to support a variety of events; this would enhance the funds available for supporting symposia. Rosa-Molinar began negotiations with Oxford University Press (initially with Cathy Kennedy and now with Ian Sherman) to raise advertising revenue through the journal, e.g., Table of Content Alert advertising with discounts to exhibitors. Additional advertising options were reviewed and are outlined in the appendix. Meeting programs also have advertising value as well as the direct sponsorship or support of other meeting functions (examples in Appendix). Vendor benefits can range from Level 1 through Level 4 and examples of these were generated based on discussions with vendors. Rosa-Molinar suggested that each member of the Executive Committee generate a list of 10 companies that scientists and educators use and which can be approached for this kind of support.

- g. **Budget.** Final discussions on the 2011 budget. Treasurer Dimock focused the group on the income summary page 2. The budgets for three committees had not been finalized at the previous meeting (Membership, Public Affairs, and Broadening Participation).

- Public Affairs Committee (PAC) has finalized its budget request of \$7,000.
- Committee on Broadening Participation (CBP) has just submitted the budget request and the Finance Committee needs time to review it. Brief discussion on the request followed. Cheryl Wilga, CBP chair answered some questions on the \$16,000 budget request indicating some of the planned activities of the committee: submit a grant proposal to NSF to support committee activities; support local undergraduates at the annual meeting, support non-local students at the annual meeting (hotel, airfare, registration). Workshops will be planned to aim at different levels of SICB

membership, e.g., undergrads and their particular issues, grad students and postdocs; also wanted a social where all levels could get together - diversity social; a major cost is to get a core group of people together to write a proposal. Dimock pointed out that the committee has nearly \$10,000 from the current budget to support committee activities up until June 30, 2010. The Finance Committee will work with Wilga to expend existing funds and to come to an agreement on the 2011 budget.

- Membership Committee has not yet submitted a budget request. Satterlie suggested that the Finance Committee work with the Membership Committee to arrive at a reasonable request.

Motion from the Finance Committee- requires no second.

Approve the budget as submitted with the stipulation that the final elements of the budget for the Committee on Broadening Participation and the Membership Committee be approved as soon as possible after the meeting.

The motion was approved by acclamation.

h. Program Update.

- Program Officer-Elect Brian Tsukimura brought up the point that decisions will have to be made if there are more oral presentations submitted in future years. The Program Committee will have only about 2 weeks to make decisions about whether to schedule more concurrent session or shorter talks. Tsukimura asked the Executive Committee to give him input. Discussion followed on the pros and the cons of 15 minute vs. 20 minute talks.

- Tsukimura also discussed the conflict between the Student Postdoctoral Affairs Workshop and the Moore Lecture and welcomed ideas from the Executive Committee. One possible resolution is to extend the meeting to a full 4 days; this would require that a symposium be scheduled on the last day.

- Grand Challenges. Some of the questions are being reframed and they fall into 2 groups: research and teaching/education/training. Tsukimura will write a summary and distribute it to the Executive Committee. Tsukimura will set up a web page with a format for posting all the Grand Challenges papers and a blog at the bottom. One problem was that people didn't know exactly where to start the discussion. Where do we want to go from here? Tsukimura wants to see if NSF will support some additional discussions throughout the year to bring in other groups and other societies. One idea offered was to invite Grand Challenge-focused symposia; this would be an opportunity to bring in speakers outside the society. There is also the need to publish some additional papers to cover some of the areas that are missing.

- Statement of Need. There was a suggestion from Joe Williams to make a collective statement for the need to increase resources for organismal biology; perhaps a statement from SICB to President Obama's Science Advisor, which could be published; members of the society could send a similar letter to representatives. The Executive Officers will consider this and report back to the Executive Committee.

i. High School Student Policy – The question arises from time to time whether high school students who are Student-in-Training (SIT) members of SICB are eligible to compete for benefits students receive associated with attendance at the annual meeting. All student members who register for the annual meeting are subsidized in that they pay greatly reduced registration fees and this practice will continue. However, many students request housing and registration assistance through SICB. It

is proposed that high school SIT members be eliminated from benefits beyond the student registration fee for the annual meeting. In practice, high school SIT members have been very few, 2 in 2008, 2 in 2009, and 23 in 2010. Only 3 are registered for the Seattle meeting.

Motion.

Williams moved (Webb seconded) that the following policy be adopted.

Benefits awarded to student members of SICB (SIT Members and Graduate Student Members) to attend the annual meeting are limited to undergraduate student and graduate student members.

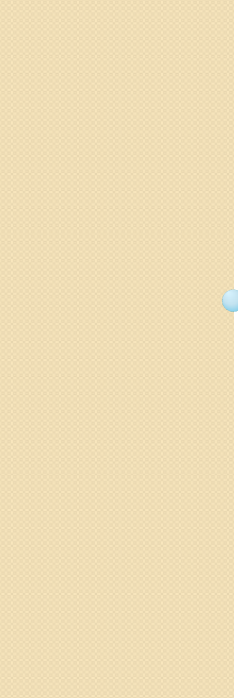
The motion passed by acclamation.

8. **Recognition of Officers** – Program Officer Eduardo Rosa-Molinar was recognized and thanked for his diligent service to the SICB with a round of applause and a gift.
9. **Adjournment** – the meeting adjourned at 9:15 a.m.



**SICB 2010 Meeting
Pre-meeting Report**
**WASHINGTON STATE CONVENTION
CENTER**

**Eduardo Rosa-Molinar
SICB Program Officer**



**Change to poster set-up times
for Tuesday and Wednesday**

- Posters for Poster Session 2 (P2) will be set up on Tuesday from 7:00-8:00 AM.
- Posters for Poster Session 3 (P3) will be set up on Wednesday from 7:00-8:00 AM.
- Poster removal is at 5:30 PM immediately following your poster session.

<p>EVENTS/FUNCTIONS</p> <p>SPECIAL SESSIONS & EVENTS Times as noted</p> <p>NOTE: All sessions and the exhibits will be in the Washington State Convention and Trade Center; meetings in hotel are noted as such</p> <p>SYMPOSIUM 8:00am-3:00pm unless otherwise noted in program</p> <p>CONTRIBUTED PAPER SESSIONS 8:00am-3:00pm unless otherwise noted in program</p> <p>Ready Room: 620 Convention Center</p>	<p>Sunday, January 3 - Day 1</p> <p>Plenary Session-John Pearse- "Reflections of a twentieth century biologist" 7:00-8:00pm-6E</p>	<p>Monday, January 4 - Day 2</p> <p>Bartholomew Award/Lecture-Roberto Nespolo- "From comparative physiology to evolutionary biology through animal biogenesis; practicing the Krogh principle in South America" 6:30-7:30pm-606-609</p> <p>Early Chordate Genomics-602/603 Metabolism, Life History & Aging-607 Honoring Richard Strathmann-615/616 Mechanics without Muscle-617</p>	<p>Tuesday, January 5 - Day 3</p> <p>Bern Lecture-Carl Schreck- "Harsuspication: why is the endocrine system so similar and why is it so dissimilar amongst fishes" 6:30-7:30pm-6E AMS Keynote Lecture-Judith Winston "Life in the colonies-the alien ways of colonial organisms." 7:00-8:00pm-602/603</p> <p>Animal Regeneration-602/603 Integrative Migration Biology-604 Antarctic Marine Biology-607</p>	<p>Wednesday, January 6 - Day 4</p> <p>Moore Lecture-Bruce Alberts- "Science education for all: what scientists must do to fulfill John Moore's legacy" 6:30-7:30 pm 606-609</p> <p>Chnidarian Tree of Life-604 Spiral Development-606 Marine Ecosystem Engineers-611 Evolution of Fish Body Plan-612</p>	<p>Thursday, January 7 - Day 5</p> <p>All Thursday Sessions end by 12:20 pm</p>
<p>POSTER SESSIONS 6 A/B/C</p> <p>Poster presenters must stand by their posters during scheduled times.</p>	<p>Poster Session 1 set up: 5:30-8:00pm</p> <p>Poster Session 1 Even # authors present: 3:00-4:00pm Odd # authors present: 4:00-5:00pm Poster Session 1 teardown: 5:00-5:30pm</p>	<p>Poster Session 2 set up: 7:00-8:00am</p> <p>Poster Session 2 Even # authors present: 3:00-4:00pm Odd # authors present: 4:00-5:00pm Poster Session 2 teardown: 5:00-5:30pm</p>	<p>Poster Session 3 set up: 7:00-8:00am</p> <p>Poster Session 3 Even # authors present: 3:00-4:00pm Odd # authors present: 4:00-5:00pm Poster Session 3 teardown: 5:00-5:30pm</p>	<p>Morning Functional Design of Heads-Working Under Water I-606 Musculoskeletal Morphology and Mechanics-Bone-608 Musculoskeletal Morphology and Mechanics-Muscle-608 Complementary Session: Evolutionary Paths Among Developmental Possibilities-605/610 Biodiversity and Biogeography-609 Species Limits and Climate Change-609 Population Genetics and Biogeography Marine Population Genetics and Biogeography-611 Stress Endocrinology-612 Evolutionary Paleobiology I/II-613/614 Metabolic Rates-615/616 Flight-Stability and Maneuverability-615/616 Terrestrial Locomotion-Jumping-617 Energetics and Fuel Allocation-617 Sensory Physiology-618 Aggression-Females-619 Aggression-Ecological Relationships-619 <i>Afternoon</i> Complementary Session: Evolutionary Paths Among Developmental Possibilities-605/610 Functional Design of Heads-Working Under Water II-606 Complementary Session: Evolution of Fish Body Plan-608 Complementary Session: Metabolism and Aging-609 Phylogenetics and Speciation I-611 Morphogenesis and Life History-612 Complementary Session: Insights of Early Chordate Genomics-613/614 Flight-Control-615/616 Reproductive Physiology-617 Functional Design of Fish Sensory Systems-618 Terrestrial Locomotion-Climbing and Training-619</p>	<p>Morning Sexual Selection-602 Swimming-Jetting-603 Mechanics of Defensive Structures-603 Adaptation-Invertebrates-604 Adaptation-Vertebrates and Robots-604 Endocrinology of Fishes-605/610 Biomechanics-Adhesion-606 Biomechanics-Gas Exchange-606 Functional Design of Heads-Biting and Chewing-607 Complementary Session: Spiral Development-608 Predation and Predator Avoidance I/II-609 Phylogenetics and Speciation II-611 Evolutionary Morphology III-611 Evolutionary Morphology II-612 Complementary Session: Chnidarian Tree of Life-612 Thermal Biology and Muscle Physiology and Biochemistry-613/614 Evo-Devo-Gene Regulation and Patterning-615/616 Evo-Devo-Modularity and Integration-615/616 Neural Control-617 Terrestrial Locomotion-High Speed Locomotion: Faster than a Speeding Bullet-618 Terrestrial Locomotion-Stability-618 Respiratory Physiology-619 Cardiovascular Physiology-619</p>

EVENTS/FUNCTIONS	Sunday, January 3 - Day 1	Monday, January 4 - Day 2	Tuesday, January 5 - Day 3	Wednesday, January 6 - Day 4	Thursday, January 7 - Day 5
EXHIBIT HOURS 6 A/B/C: Coffee breaks from 9:30-10:30am & 3:30-4:30pm	Exhibitor set-up Noon-8:00pm	9:30am-6:00pm	9:30am-6:00pm	9:30am-5:30pm	
COMMITTEE & BOARD MEETINGS	Executive Committee 2:30-5:30pm Cirrus Room, Top Floor, Sheraton Hotel	DPOs and Symposium Organizers for Salt Lake Noon-1:00pm-601 Div Chrs Pres/Pres-Elect Noon-1pm-Douglas Room (Sheraton hotel) Public Affairs Committee Noon-1:00pm-Alki Boardroom (Sheraton hotel) SICB Nominating Comm 8:00-9:00pm-Eagle Board Room (Sheraton hotel) AMS Executive Committee 8:00-11:00pm-Greenwood Room (Sheraton hotel)	Broadening Participation Committee 7:00-8:00am-Eagle Boardroom (Sheraton hotel) Development Committee 7:00-8:00am-Richmond Room (Sheraton hotel) AMS IB Editors 7:00-8:00am-Alki Boardroom (Sheraton hotel) SICB Division Secretaries Noon-1:00pm-Alki Boardroom (Sheraton hotel) Educational Council/DLAB Noon-1pm-Aspen Room (Sheraton hotel) SICB Editorial Board Noon-1:00pm-Diamond Room (Sheraton hotel) TCS Board 4:30-6:30pm-Diamond Room (Sheraton hotel) Advisory Comm 7:45pm-Satterlie Suite Student Support Committee 8:00-9:00pm-Cedar Room (Sheraton hotel)	AMS Business Meeting 10:30-11:45am-617 SICB Business Meeting 5:15-6:15pm-605/610	Executive Committee 7:00-9:00am- Cirrus Room, Top Floor, Sheraton Hotel
BUSINESS MEETINGS	DAB Bus Mtg/Social 5:15-5:45pm-Aspen Room (Sheraton hotel) DCPB Business Mtg 5:15-6:15pm-604 DCB Business Mtg 5:15-6:15pm-612 DEDB/DDCB Business Mtg 5:15-6:15pm-617 DEE Business Mtg 5:15-6:15pm-610 DIZ Business Mtg 5:15-6:15pm-611 DNB Business Mtg 5:15-5:45pm-619 DSEB Business Mtg 5:15-6:15pm-618	COPUS Workshop Noon-1:00pm-601 Workshop: Phylogenetics for Dummies, Part 1 7:30-10:30pm-619	AMS Business Meeting 10:30-11:45am-617 SICB Business Meeting 5:15-6:15pm-605/610	Workshop: Implementation of the Grand Challenges Noon-3:00pm-602/603 Post Doc/Student Workshop: "Careers Outside of Traditional Academia" 6:15-8:00pm-613/614	
WORKSHOPS & PROGRAMS	Student First Timer/Student Worker Orientation "How to Get the Most Out of Your SICB Meeting" 5:30-6:30pm-602/603	Companion Orientation Program/ Continental Breakfast 9:00-10:00am-Greenwood (Sheraton hotel) DAB/DNB Social 6:00-7:00pm-Aspen Room (Sheraton Hotel) DDCB/DEDB/DSEB Social 6:30-8:30pm-Willow Room (Sheraton hotel) DCPB Social 7:30-8:30pm-Registration lobby	SRC Breakfast 6:30-8:00am-Daily Grill (Sheraton Hotel) Brown Bag Lunch-Broadening Participation Noon-1pm-6E Integrative Migration Biology Symposium Reception 5:00-6:30pm-Aspen Room (Sheraton hotel) DIZ/DEE/AMS Strathmann Social 5:00-7:00pm-Registration Foyer DVM/DCB Social 6:30-8:00pm-608/609 DCE Social 7:30-10:00pm-6E (back of lecture room) TCS Business Mtg/Social 6:30-10:00pm-Issaquah Room (Sheraton Hotel)	Workshop: Implementation of the Grand Challenges Noon-3:00pm-602/603 Post Doc/Student Workshop: "Careers Outside of Traditional Academia" 6:15-8:00pm-613/614 AMS Luncheon Noon-1:00pm-601 Society-wide Dessert Social in Honor of Students and Post Docs 8-9:30pm-Grand Ballroom, 2 nd level, Pike Tower (Sheraton Hotel)	
SOCIAL EVENTS	Welcome Reception 8:00-9:30pm-Grand Ballroom, 2 nd level, Pike Tower (Sheraton Hotel)	Companion Orientation Program/ Continental Breakfast 9:00-10:00am-Greenwood (Sheraton hotel) DAB/DNB Social 6:00-7:00pm-Aspen Room (Sheraton Hotel) DDCB/DEDB/DSEB Social 6:30-8:30pm-Willow Room (Sheraton hotel) DCPB Social 7:30-8:30pm-Registration lobby	SRC Breakfast 6:30-8:00am-Daily Grill (Sheraton Hotel) Brown Bag Lunch-Broadening Participation Noon-1pm-6E Integrative Migration Biology Symposium Reception 5:00-6:30pm-Aspen Room (Sheraton hotel) DIZ/DEE/AMS Strathmann Social 5:00-7:00pm-Registration Foyer DVM/DCB Social 6:30-8:00pm-608/609 DCE Social 7:30-10:00pm-6E (back of lecture room) TCS Business Mtg/Social 6:30-10:00pm-Issaquah Room (Sheraton Hotel)	Workshop: Implementation of the Grand Challenges Noon-3:00pm-602/603 Post Doc/Student Workshop: "Careers Outside of Traditional Academia" 6:15-8:00pm-613/614 AMS Luncheon Noon-1:00pm-601 Society-wide Dessert Social in Honor of Students and Post Docs 8-9:30pm-Grand Ballroom, 2 nd level, Pike Tower (Sheraton Hotel)	
REGISTRATION-6th Floor Foyer, Convention Center	3:00-8:30pm	7:00am-5:00pm	7:30am-5:00pm	7:30am-2:00pm	7:30am-12:00pm

Late-breaking symposia – status and funding

- ISI: *Insights of Early Chordate Genomics: Endocrinology and Development in Amphioxus, Tunicates and Lampreys* (Monday 1/4)-funded by NSF (\$25,119)
- SICB invites you to submit symposia proposals address exciting, new topics of importance that have emerged within the past year and the close of the regular symposia proposal submission process.
- The same template used for the regular symposia applications will be used for late-breaking symposia applications.
- Late-breaking symposia proposals will be reviewed by a committee composed of the Divisional Program Officers and the Society-Wide Program Officer.

Pre-meeting registration

- **No of abstract submitted: (orals vs. posters):** at program meeting there were 1308 total, 811 oral, 497 posters; abstracts for symposia, etc. came in after that to make 1,329 total; total currently in system: 1269, 785 oral, 484 posters
- **No of abstracts withdrawn (orals vs. poster):** since program meeting: 45 total, 32 oral, 13 posters
- **Total number of registrations online:** 1,549; this is online only; this does not include fax and regular mail (**will have this data for the second and final report of the meeting**)
- **Total number of exhibitors:** 36 companies
- **Total number of members (faculty) registered and presenting:** 434 members registered
- **Total number of graduate students registered and presenting:** 565 Graduate students registered

Pre-meeting registration

- Total number of post-doctoral fellows registered and presenting: 188 post docs registered
- Total number of undergraduates registered and presenting: 172 Undergrad students registered
- Total number of high school students registered and presenting: 3 high school students registered
- Student support: 287- housing; 67 - registration

Additional notes

- Internet free in the hotel (i.e. lobby, business center)
- No internet in the convention center

Other:

- **ICB advertising options for symposium sponsors (Thanks Ian!!)**

Print		Black and white/issue	Black and white/6 issues (one calendar year)	Color/issue	Color/6 issues (one calendar year)
Full page	Inside back cover	\$2500	\$10,000	\$5000	\$20,000
	Opposite inside back cover	\$2000	\$8000	\$4000	\$16,000
	Other	\$1500	\$6000	\$3000	\$12,000
Half page	Inside back cover	\$1250	\$5000	\$2500	\$10,000
	Opposite inside back cover	\$1000	\$4000	\$2000	\$8000
	Other	\$750	\$3000	\$1500	\$6000

Online options

1. Banner ad on home page and Contents page



Three months	Three months prior to annual meeting	12 months
600.00	1,200.00	2,400.00

Online options

2. Banner ad on full text of individual papers



Three months	Three months prior to annual meeting	12 months
\$600.00	\$1200.00	\$2400.00

Online options

Ian did some research on the web, and looked at the fees of several pages that do publish such rates. It seems to be common to cite fees in "Dollars per 1000 impressions". For example, our homepage has 260,000 impressions per year. So a fee of \$10 per 1000 impressions would come to \$2600 per year for an ad on the homepage if it comes up every time on the homepage for the entire year. Sub-pages would carry lower charges depending on their popularity.

The usual rates seem to go from \$5 per 1000 impressions to about \$20 per 1000 impressions, mainly depending on the size and location of the banner on the page.

So for a good sized ad on the homepage in a fairly prominent location we could ask somewhere in the \$3000-\$4000 range per year.

Support Benefits

- Level 1: \$20,000 Four (4) full registrations to the conference
- Level 2: \$10,000 Two (2) full registrations to the conference
- Level 3: \$5,000 One (1) full registration to the conference
- Level 4: \$1,000

REGISTRATIONS

LOGO/NAME INCLUSION

- Large (1/2 page) a logo included in conference materials and website (linked)
- Large size logo included on event signage
- Large size logo projected at supported session.
- Medium (1/4 page) a logo included in conference materials and website (linked)
- Medium size logo included on event signage
- Bold text name included in conference materials and website (linked)
- Name included in conference materials and website (linked)
- Name/Logo included on support page of conference program

EXHIBIT SPACE

- Premium space in conference exhibit area
- Space in conference exhibit area



NETWORKING and MARKETING OPPORTUNITIES

- Opportunity for supporter to introduce speakers
- Opportunity to display 1 vertical banner in networking area of event
- Opportunity to display brochures on resource table located in exhibit area
- Badge Lanyards
- Conference Bags/T-shirts



SUPPORT OPPORTUNITIES

- Reception
- Opening Mixer
- Keynote Speaker Symposium Session
- Symposium session
- Poster Session Contribution
- Dinner Contribution
- Dinner Contribution
- Symposium Session(s)
- Lunch


Symposia and funding (n=11)

- IS1: Insights of Early Chordate Genomics: Endocrinology and Development in Amphioxus, Tunicates and Lampreys (Monday 1/4)-Funded NSF
- IS2: Metabolism, Life History and Aging (Monday 1/4)- Funded NSF; Glenn Foundation for Medical Research; American Federation for Aging Research, the Ellison Medical Foundation
- IS3: Evolutionary Paths among Developmental Possibilities: a Symposium Marking the Contributions and Influence of Richard Strathmann (Monday 1/4)-**Not Funded**
- IS4: Mechanics without Muscle: Evolutionary Design of Macrophytes (Monday 1/4)-**Not Funded**
- IS5: Animal Regeneration: Integrating Development, Ecology & Evolution (Tuesday 1/5)-Funded NSF; SDB
- IS6: Integrative Migration Biology (Tuesday 1/5)-Funded NSF-RCN
- IS7: Advances in Antarctic Marine Biology (Tuesday 1/5)-Funded NSF
- IS8: Assembling the Cnidarian Tree of Life (Wednesday 1/6)-Funded NSF
- IS9: Spiralian Development: Conservation and Innovation (Wednesday 1/6)-**Funded SDB**
- IS10: Marine Ecosystem Engineers in a Changing World: Establishing Links across Systems (Wednesday 1/6)-Funded NSF
- IS11: Contemporary Approaches to the Study of the Evolution of Fish Body Plan and Fin Shape (Wednesday 1/6) **NSF grant still under consideration**

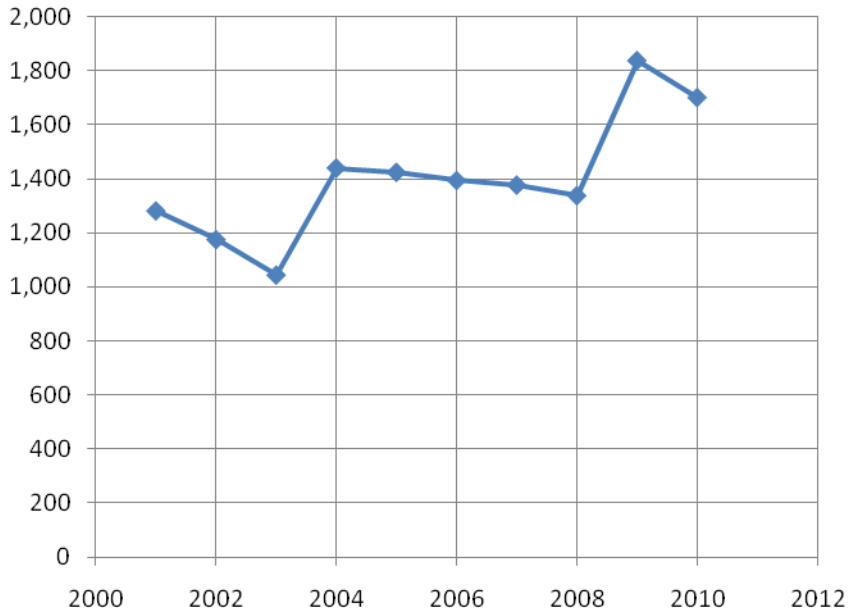
Appendix 3.PO.b, Meeting Registration Report

SICB Annual Meeting Attendance

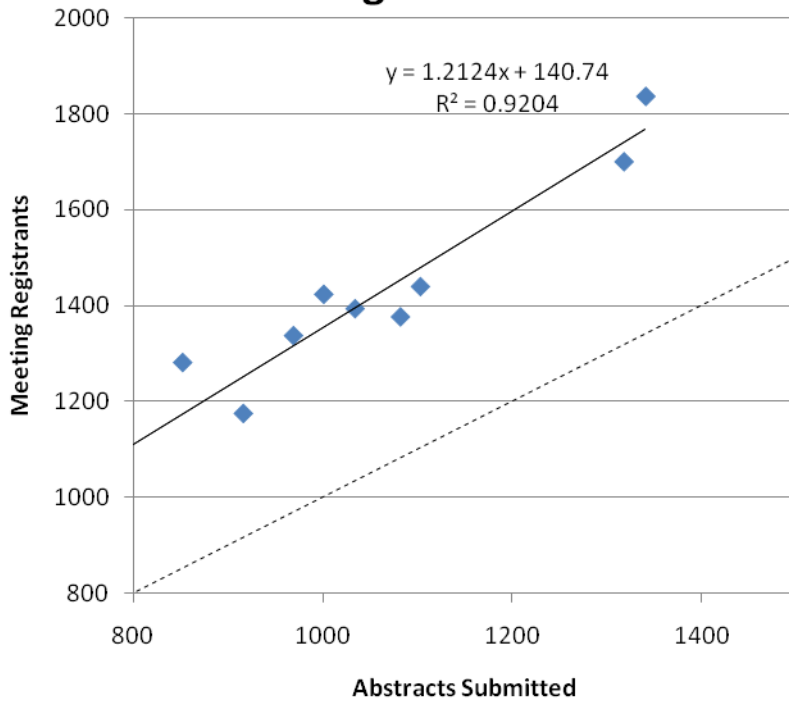
Year	Location	PreReg	On Site Reg	Total Registration	Total Abstracts	Abst. % of Total	Factor (convert Abstracts to Regist.)
2001	Chicago			1,282	852	66	1.50
2002	Anaheim			1,176	916	78	1.28
2003	Toronto			1,045	780	75	1.34
2004	New Orleans			1,440	1,103	77	1.31
2005	San Diego			1,424	1,001	70	1.42
2006	Orlando			1,394	1,034	74	1.35
2007	Phoenix			1,377	1,082	79	1.27
2008	San Antonio	1,294	44	1,338	969	72	1.38
2009	Boston	1,769	67	1,836	1,341	73	1.37
2010	Seattle	1,614		1,700	1,318	78	1.29
Average				1,401	1,040	74	1.35

 Indicates estimate

SICB AM Attendance



Annual Meeting Abstracts vs. Registrants



Appendix 3.Secy.a, Secretary Report

Lou Burnett, Secretary

The items reported here are ones in which the secretary had significant involvement.

The overall organization of the society continued to improve in 2009. The online calendar has proven to be useful and important to the executive officers and the Executive Committee. Landmark events throughout the year have been added to the calendar.

The newsletter underwent a major transition from a web-based format to an Adobe Acrobat format, fueled by standard publishing software. Hyperlinks throughout the newsletter facilitate online browsing. The new format is consistent with online publishing practices and the way people use the internet. In addition, the printable form of the newsletter is much more conducive to reading than the previous format. The newsletter continues to be populated with photographs.

Surveying tools and the use of Google documents have provided the Executive Committee with effective mechanisms for communicating opinions on various topics and for calling for votes on important issues including SICB meeting sites and editorial board appointments.

SICB Member Updates were initiated to provide members with monthly updates on the activities of the society.

The administration of the Best Student Presentation Awards was greatly improved and streamlined with clear guidelines for divisions and divisional secretaries in reporting the results of the awards. Students were notified and received award certificates and checks within three to four weeks of the outcome of the BSP Awards from the Boston meeting and the results were posted on the web site in a timely manner.

The executive officers of the society had significant interaction with each other throughout the year with a total of 41 conference calls and an October planning meeting in Seattle.

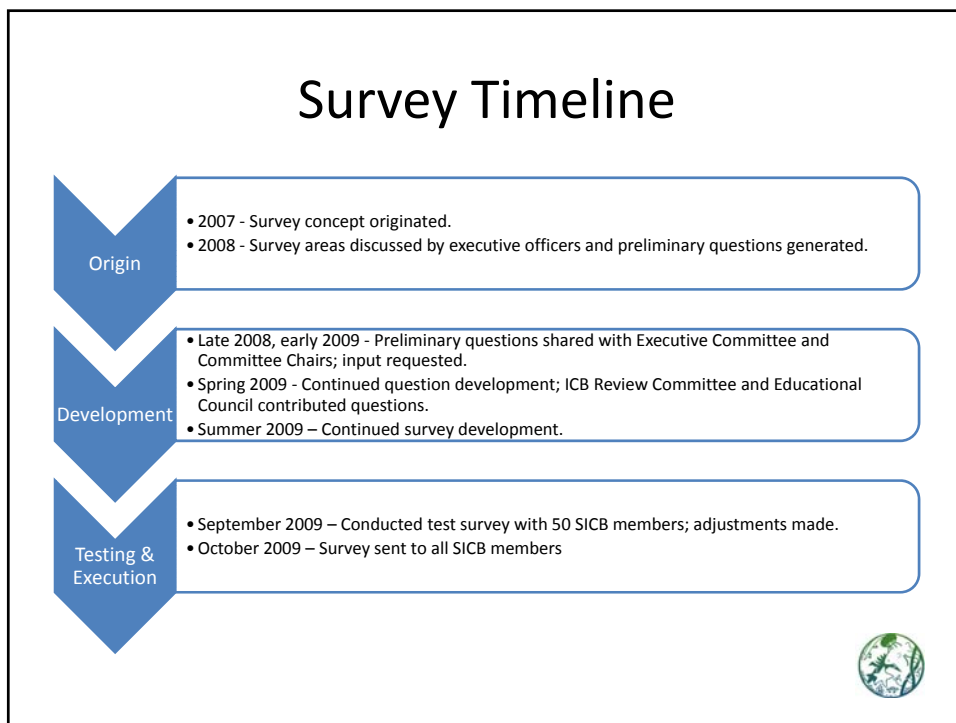
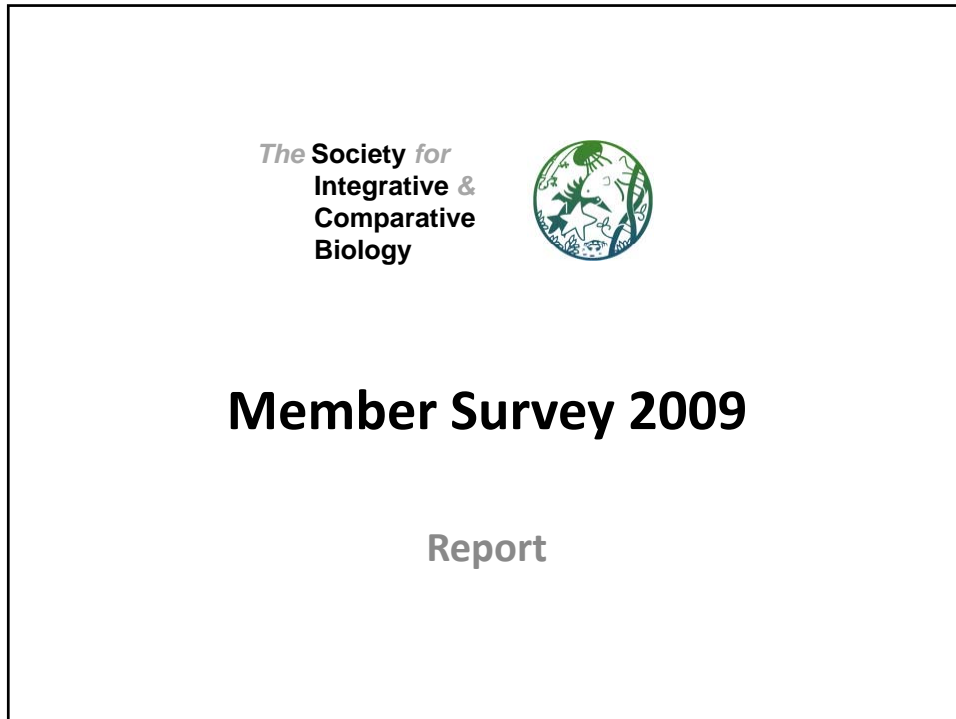
Appendix 3.Secy.b, SICB Election Schedule for Spring 2010

SICB-Wide Elections in 2010

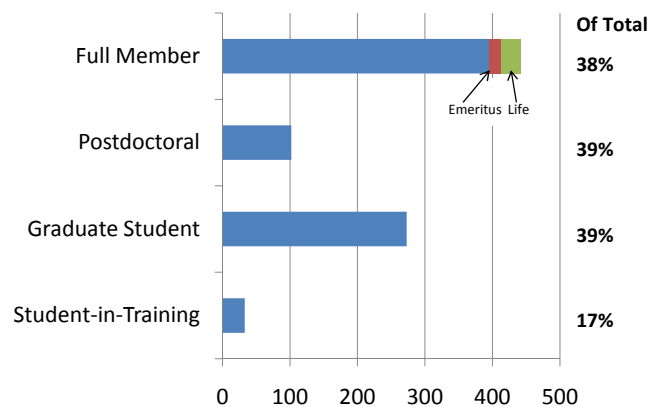
President-Elect
Program-Officer Elect
Secretary-Elect
Member-At-Large

Divisional Elections in 2010

Division of Animal Behavior	Program Officer
Division of Comparative Biomechanics	Chair-Elect
Division of Comparative Endocrinology	Program Officer-Elect
Division of Comparative Biochemistry & Physiology	Chair-Elect Program Officer-Elect
Division of Developmental & Cell Biology	Chair Program Officer
Division of Evolutionary Developmental Biology	Chair-Elect
Division of Ecology & Evolution	Secretary
Division of Invertebrate Zoology	Program Officer
Division of Neurobiology	Chair Program Officer
Division of Systematics & Evolutionary Biology	Program Officer-Elect
Division of Vertebrate Morphology	Program Officer-Elect Secretary-Elect



850 Members Responding – 35%



Demographics

Gender

- Female 42.8%
- Male 57.2%

University System

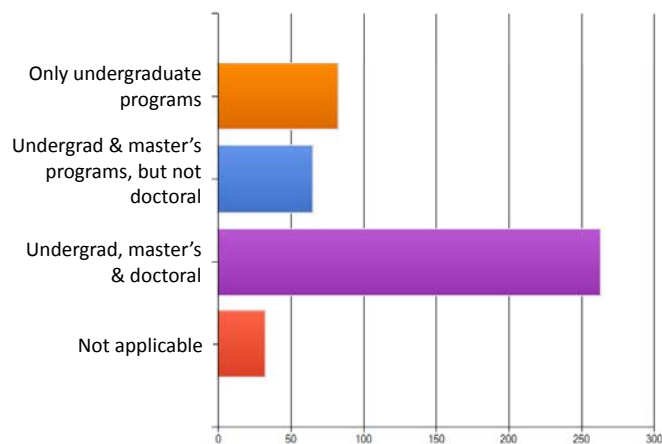
- Semester 78.2%
- Quarter 14.8%



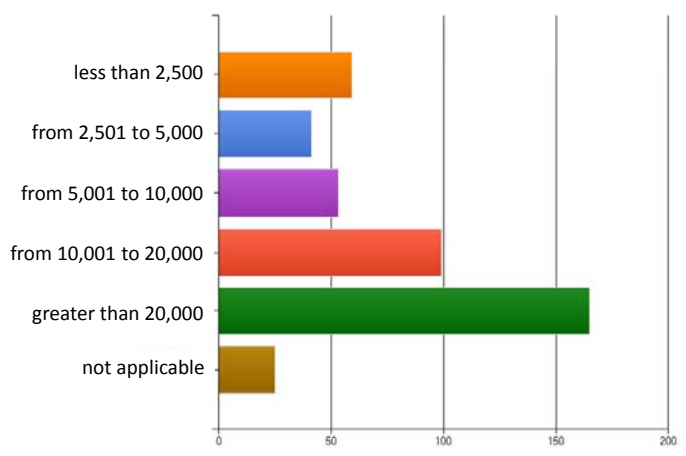
The following questions represent responses from 442 Full Members (includes Emeritus Members and Life Members) unless otherwise noted.



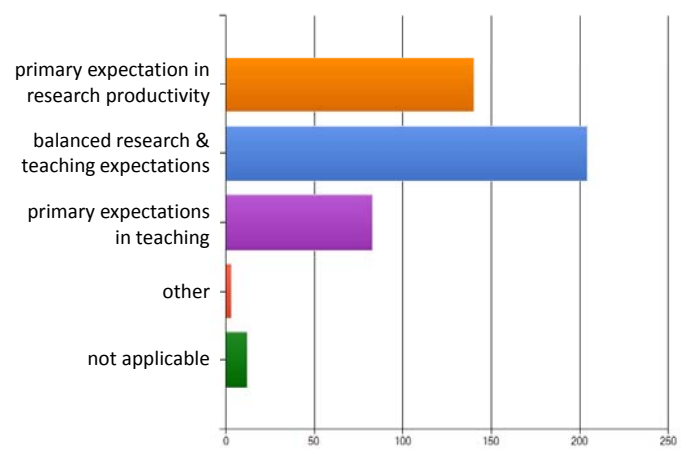
Indicate the selection below that best describes your institution with respect to programs in biology or programs where students can study biology.



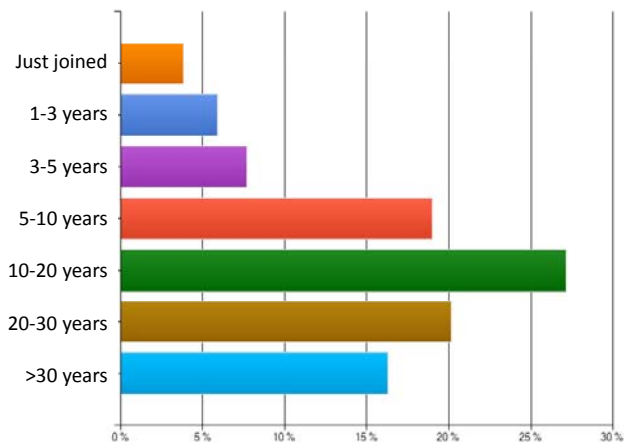
Which best describes the size of your institution? The categories below include undergraduate and graduate students.



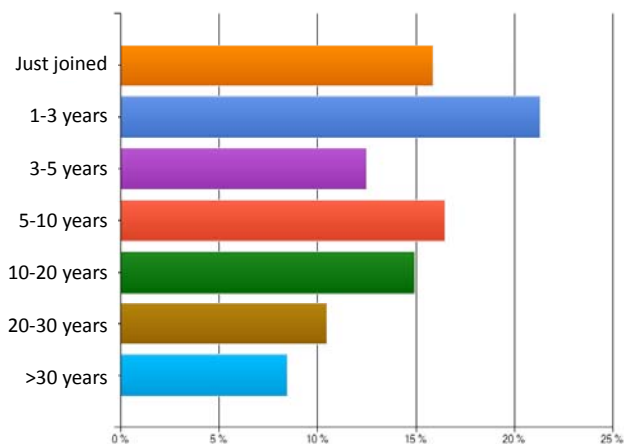
Which best describes your institution?



How long have you been a member (of any status) of this society?
FULL MEMBERS

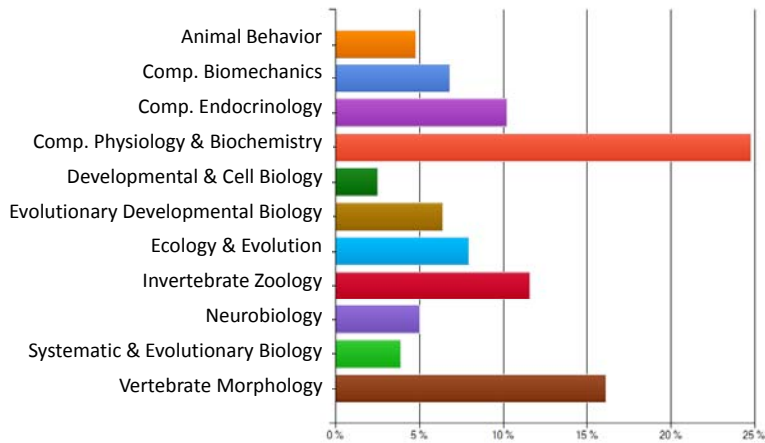


How long have you been a member (of any status) of this society?
ALL MEMBERS



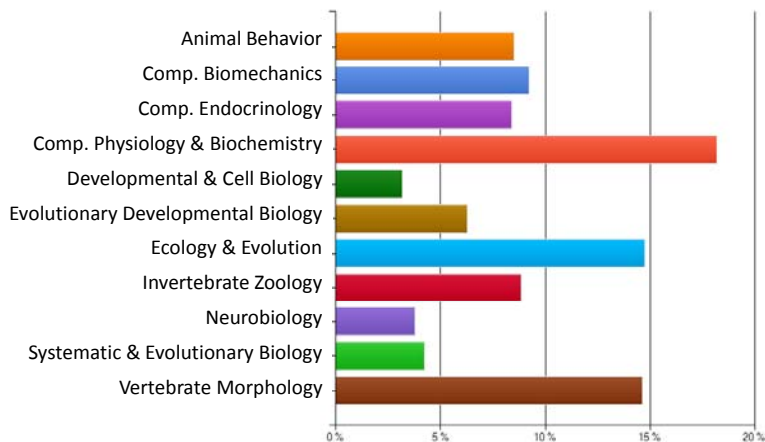
What do you consider your primary divisional affiliation? Choose only one.

FULL MEMBERS

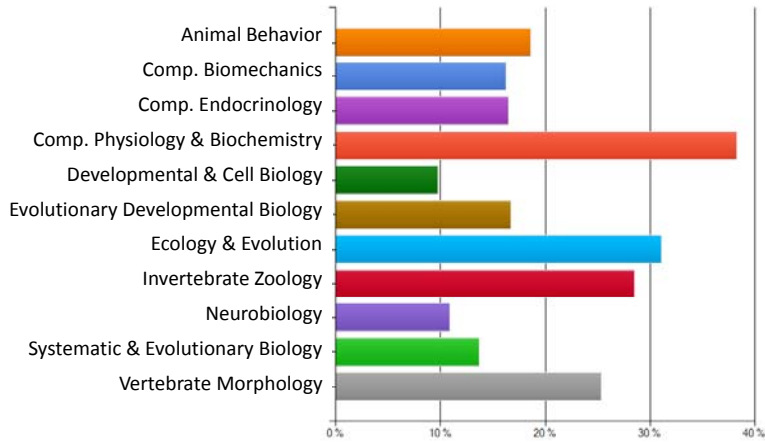


What do you consider your primary divisional affiliation? Choose only one.

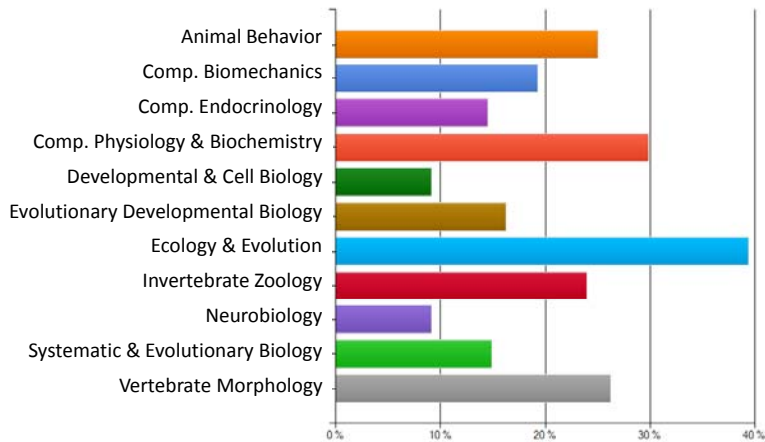
ALL MEMBERS



Please indicate all divisions with which you are formally affiliated (i.e., the divisions indicated on your member database and those for which you receive ballots). **FULL MEMBERS**



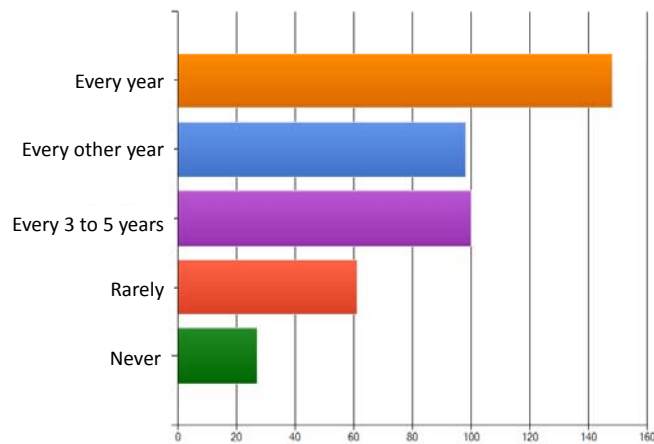
Please indicate all divisions with which you are formally affiliated (i.e., the divisions indicated on your member database and those for which you receive ballots). **ALL MEMBERS**



QUESTIONS ABOUT THE ANNUAL MEETING

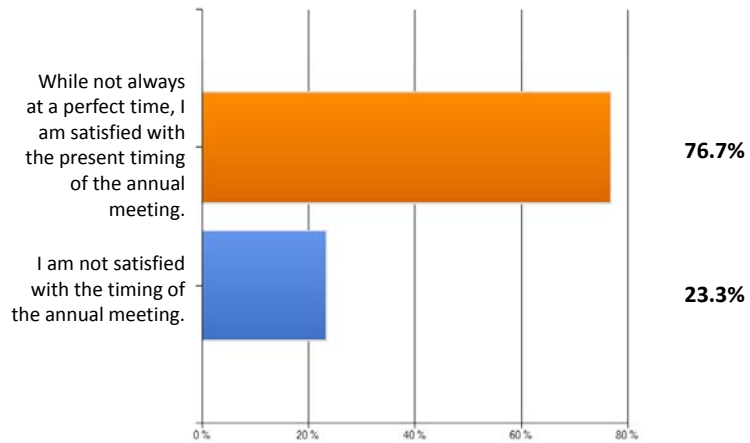


In general, how often do you attend the SICB Annual Meeting?



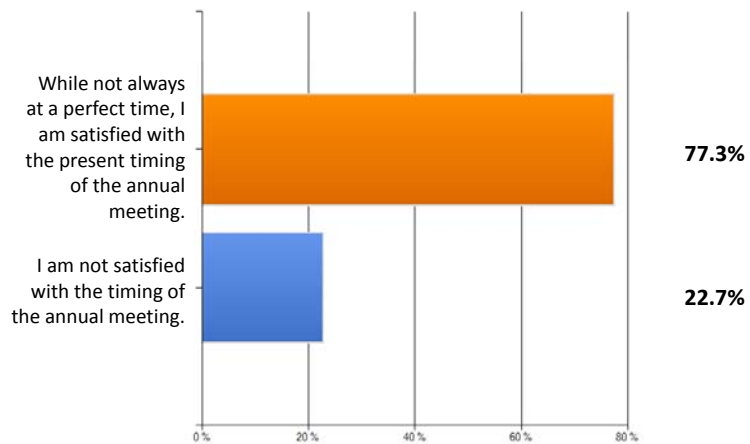
Choose the option below that best describes your position on the present timing (early January) of the annual meeting.

FULL MEMBERS



Choose the option below that best describes your position on the present timing (early January) of the annual meeting.

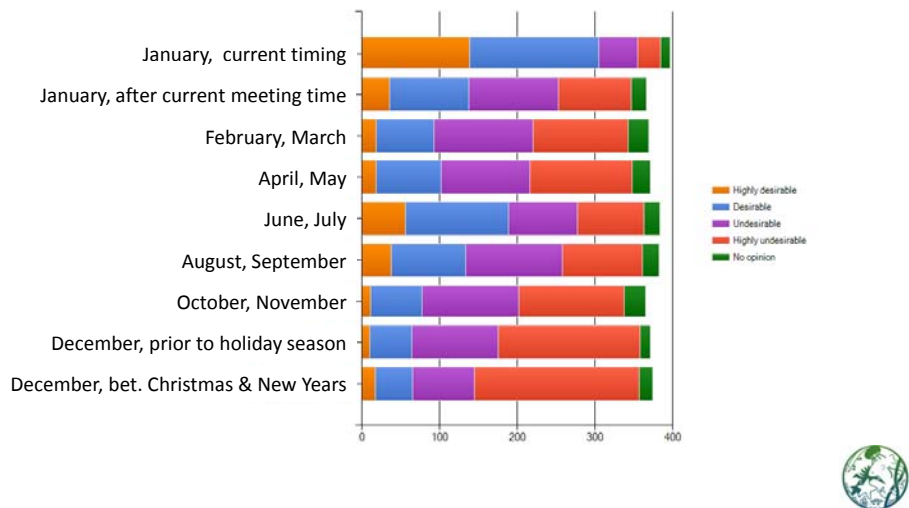
ALL MEMBERS



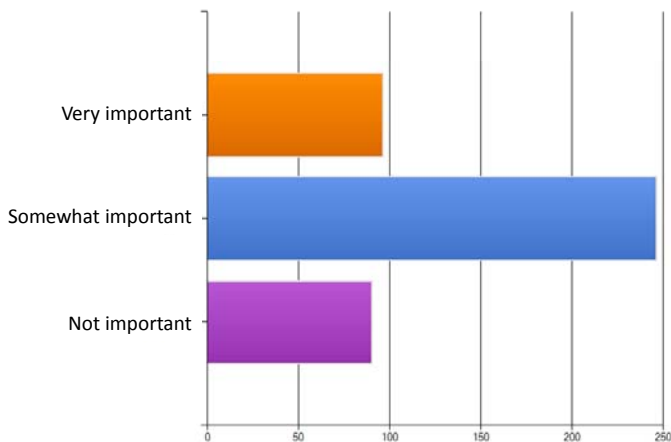
Please indicate your preferences for the meeting times listed below.



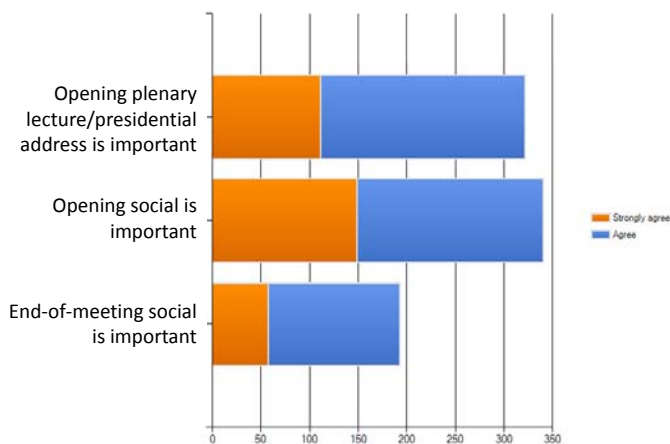
Please indicate your preferences for the meeting times listed below.



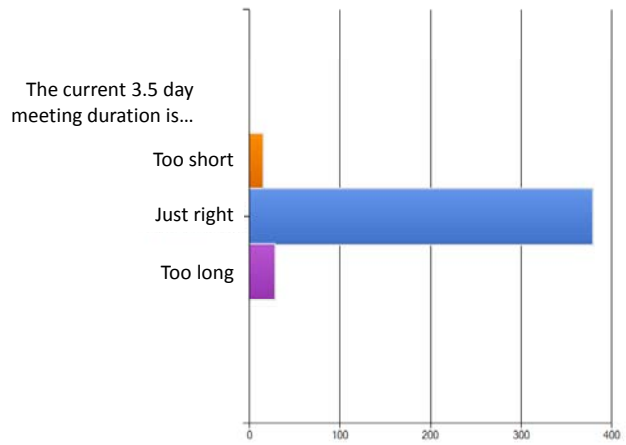
Meeting location. How important is the location of the meeting in deciding whether or not to attend?



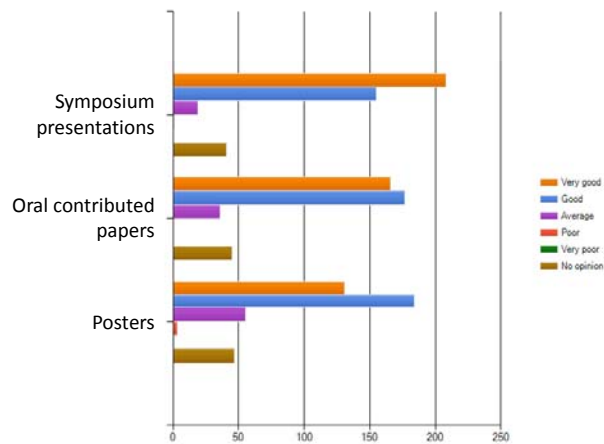
Meetings begin with a plenary lecture or presidential address and an opening social function, followed by 3.5 days of symposia, workshops, contributed paper sessions, poster sessions, various meetings and an end-of-meeting social. Please indicate your choices related to meeting programs.



Length of meeting. As stated above, the length of the SICB annual meeting is 3.5 days. Please indicate your feelings about the length of the meeting.



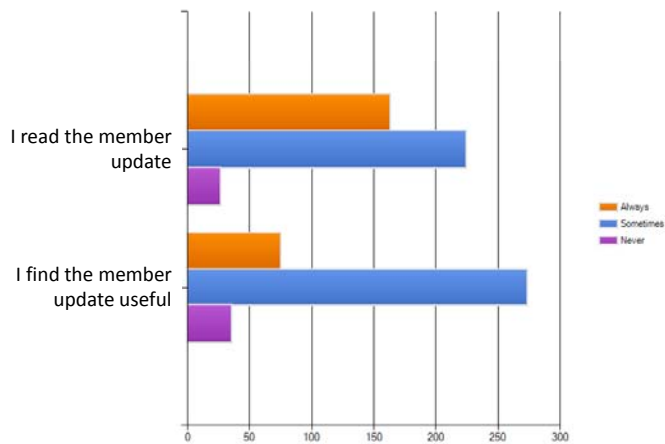
Quality of programs. Please give your impressions of the overall quality of the major types of meeting programs.



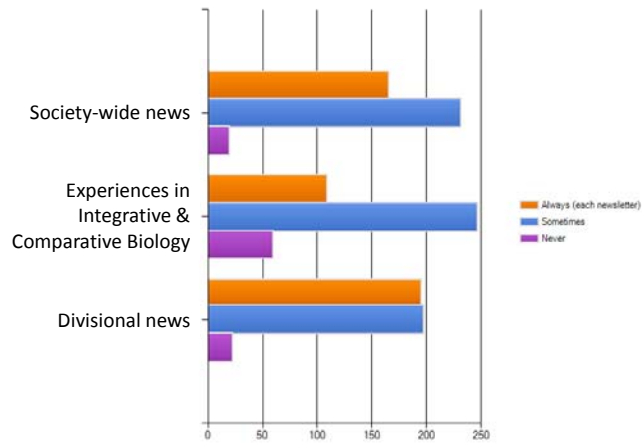
QUESTIONS ABOUT SICB COMMUNICATIONS



SICB Member Update. The member update is emailed to members on a monthly basis.



SICB Newsletter. The newsletter is published in the spring and the fall of each year. Please indicate how you read the different parts of the newsletter.



Appendix 3.Secy.d, Administrative Procedures on Divisional Best Student Presentation Awards at the Annual Meeting

This procedure describes a process that outlines the responsibilities of divisional representatives, the SICB business office, and the SICB Secretary in publishing the names of the student award winners and in presenting the students with their awards.

1. Divisional procedures and awards committee appointment. Divisions should review their procedures and the Chair should appoint an awards committee no later than the summer prior to the annual meeting. This is a part of the SICB calendar.

2. Awards associated with prizes with budgetary implications. The review of the procedures must include provisions in the divisional budgets for cash awards, memberships, or other prizes that the division will award to student award winners. Wiley-Blackwell has generously underwritten the Best Student Presentations such that each division is allocated \$300 for the student awards (\$150 for best oral presentation and \$150 for best poster presentation). Wiley-Blackwell also provides student winners with a free one year subscription to an appropriate one of their journals. The following journals are associated with the divisions.

Division of Animal Behavior	Ethology
Division of Comparative Biomechanics	J. of Zoology
Division of Comparative Endocrinology	J. Exp. Zoology A
Division of Comparative Physiol. & Biochem.	J. Exp. Zoology A
Division of Developmental & Cell Biology	J. Exp. Zoology B
Division of Evolutionary Developmental Biol.	J. Exp. Zoology B
Division of Ecology & Evolution	Ecology Letters
Division of Invertebrate Zoology	Invertebrate Zoology
Division of Neurobiology	Developmental Neurobiology
Division of Systematic & Evolutionary Biol.	Evolution
Division of Vertebrate Morphology	J. Morphology

3. Certificates. SICB headquarters will make available certificates for each division to present to the student award winners. A sample of the certificates will be provided to the Chairs of each division before or during the annual meeting. At this time, Chairs should order special wording. Certificates will be printed by the business office once student award winners are known.

4. Reporting winners to SICB. Divisions handle the mechanisms of judging in different ways. However, the winners of the competitions should be announced on the SICB web site as soon as possible after the annual meeting. **To this end, it is the responsibility of the divisional Secretary to report the winners to the SICB Secretary within two weeks after the annual meeting.**

5. Notifying students of their award. It is the responsibility of the divisional Chair to notify the students of the status of their awards. The Chair should announce the winners to all students in the division who entered the contest. This can be done simply by an email congratulating the student winners. In this communication, each Chair can indicate that the winners will receive a certificate, a check and a subscription to one of the Wiley journals.

6. Certificates (and checks) will be sent to award winners by the SICB business office. Once the student winners are known, the certificates will be completed for each division by SICB headquarters and mailed along with the check to the award winner.

Appendix 3.Secy.e, Proposed SICB Bylaws Change – Best Student Presentation Awards

Divisional bylaws governing the Best Student Presentation Awards (many are referred to as Best Student Paper Awards) in many cases do not address clearly some important eligibility requirements. There is some confusion over what is required and what is not based on a survey of divisional chairs and secretaries conducted in September 2009 by the Secretary.

Questions/Statements on Divisional Practices Best Student Presentation Awards Survey Responses of Chairs & Secretaries, Sept 2009	DAB	DAB	DCB	DCE	DCE	DCPB	DDCB	DDCB	DEDB	DIZ	DIZ	DNB	DNB	DSEB	DSEB	DVM
My division mentions a specific dollar amount for the BSP award.	Can't tell	TRUE	NA	TRUE	TRUE	FALSE	TRUE	FALSE	TRUE	FALSE	FALSE	Can't tell	TRUE	FALSE	FALSE	TRUE
My division allows undergraduate students to compete in the BSP competition.	TRUE	Can't tell	TRUE	Can't tell	TRUE	TRUE	Can't tell	FALSE	TRUE	TRUE	TRUE	Can't tell	TRUE	TRUE	TRUE	Can't tell
My division allows a student who has received a Ph.D. to compete in the BSP competition, provided the Ph.D. was awarded within the past 12 months.	Can't tell	Can't tell	Can't tell	TRUE	TRUE	TRUE	TRUE	TRUE	TRUE	TRUE	TRUE	Can't tell	Can't tell	TRUE	TRUE	TRUE
If a student wins the best <u>oral presentation</u> award, my division will NOT allow that student to compete for this same award (best oral presentation) in the future.	TRUE	Can't tell	FALSE	Can't tell	FALSE	TRUE	TRUE	Can't tell	TRUE	TRUE	Can't tell	Can't tell	TRUE	TRUE	TRUE	Can't tell
If a student wins the best <u>oral presentation</u> award, my division will NOT allow that student to compete for the best <u>POSTER presentation</u> award in the future.	FALSE	Can't tell	Can't tell	Can't tell	FALSE	TRUE	Can't tell	Can't tell	Can't tell	FALSE	Can't tell	Can't tell	TRUE	FALSE	FALSE	FALSE
My division requires a set and specific number of judges.	FALSE	FALSE	FALSE	FALSE	FALSE	FALSE	TRUE	FALSE	TRUE	FALSE	TRUE	FALSE	FALSE	FALSE	TRUE	TRUE
My division requires that competing students be a member of my division.	FALSE	Can't tell	TRUE	Can't tell	FALSE	TRUE	Can't tell	FALSE	FALSE	FALSE	FALSE	Can't tell	FALSE	FALSE	FALSE	FALSE
Opinions of respondents.																
Do you think all students (undergraduate and graduate) should be able to compete for the BSP awards?	Yes	Yes	Yes	No	Yes	Yes	Yes	No	Yes	Yes	Yes	Yes	Yes	Yes	Yes	No
Do you think a recent (within 12 months) Ph.D. recipient should be able to compete in the BSP awards?	No	Yes	No	Yes	Yes	Yes	Yes	Yes	Yes	Yes	Yes	Yes	No	Yes	Yes	Yes
Should a student who wins a best oral presentation award in your division be allowed to compete for <u>the same</u> award in your division in the future?	No	No	No	Yes	Yes	No	No	Yes	No	No	Yes	No	Yes	No	No	No
Should a student who wins a best oral presentation award in your division be allowed to compete for a <u>best poster presentation</u> award in your division in the future?	Yes	Yes	Yes	Yes	Yes	No	Yes	Yes	Yes	Yes	Yes	Yes	Yes	Yes	Yes	Yes
Should a student who wins a best presentation award (either oral or poster) in your division be allowed to compete for a best presentation award (either oral or poster) in <u>another division</u> in the future?	Yes	Yes	Yes	Yes	Yes	Yes	Yes	Yes	Yes	Yes	Yes	Yes	Yes	Yes	Yes	Yes

Proposed SICB Bylaws Amendment

Article XVI: Awards (NEW)

Section 1. Best Student Presentations. Each division may elect to have awards for best student presentations at the annual meeting. Separate awards may be given for best oral presentation and best poster presentation. Each division is responsible for securing a panel of judges and establishing procedures for selecting award recipients. Divisions may have additional restrictions or requirements than those set forth here. Competitors must be members of SICB and are responsible for checking divisional rules.

Student-in-Training Members, Graduate Student Members and those who have received a Ph.D. within 12 months of the competition are eligible to compete for awards. A presentation (oral or poster) may be entered in only one divisional contest. A student who wins best oral presentation in a given division may not compete in best oral presentation contest in that same division in the future. A student who wins best poster presentation may not compete in best poster presentation contest in that same division in the future. Student award winners in one division are not excluded from competing for awards in other divisions in other years.

Article ~~XVI~~ XVII: Bylaws (RENUMBERED)

Section 1. Proposed amendments of the Bylaws may be originated by the Executive Committee or by the members of the Society. Proposals from members shall be submitted to the Executive Committee in writing and shall bear the signatures of at least twenty-five members.

Section 2. The Bylaws may be amended by a two-thirds vote of the members voting by ballot, provided a quorum of the Society membership votes (see Article V of the Constitution). Proposed amendments to the Bylaws shall be posted by the Society Secretary on the Web Page at least one month prior to voting. Ballots will be made available to the membership and one month will be allowed for voting. The ballot closing date shall be stated on the ballot.

Section 3. Votes will be collected and tabulated and the Secretary will notify the Executive Committee of the results. The Secretary will also post the results on the Society's Web Page and in the appropriate fall or spring Newsletter.

Section 4. Amendments shall become effective following their adoption as stated in Article ~~XVI~~ XVII Sections 1-3.

Appendix 3.Treas.a - Treasurer Report

Ron Dimock, Treasurer

Society recovering from very rocky road

Since 2002 the Society has invested a total of \$779, 498 with a professional financial management group under the guidance of Matthew Tederick. On December 31, 2007 that account was worth \$1,160, 976. Unfortunately, by December 31, 2008, the portfolio had decreased nearly \$300,000 to end the year at \$836,475. With the recent run up of the market since March 2009, I'm happy to report that the portfolio is worth \$972,968 as I write this on December 29, 2009. Therefore SICB has recouped roughly half of the loss suffered in 2007-2008. Our manager continues to hold approximately 15% of assets in cash, and is poised to invest those monies when he has more confidence that the recovery is indeed fully underway. His summary reports are next on the agenda.

SICB remains fiscally solvent

The audit for fiscal 2008 (ending June 30) showed the Society's total assets to be \$1,517,375. The corresponding figure for fiscal 2009 is \$1,304,782, and of course does not reflect the increase in investments that has occurred since June 30, as noted above. These data, however, clearly illustrate the responsibility of the Finance Committee and the Executive Committee to be good stewards of Society assets which obviously can fluctuate markedly over a short timeline.

Fiscal 2009 ends on very positive note thanks to Boston meeting

The above mentioned status of SICB's net assets notwithstanding, Fiscal 2009 ended surprisingly well. The budget had projected net annual income to be \$34,564 in the red (not including capital gain/loss), but actually finished the year \$67,754 in the black! This was due almost entirely to the revenue generated by the annual meeting in Boston, \$101,717. This figure is attributable to the joint impact of various savings engineered by Sue Burk, the great increase in attendance, the timely increase in registration fees, and the cap of \$100 on reimbursement to symposium speakers. Unfortunately this wonderful outcome of the Boston meeting only served to offset the dismal performance of the market earlier in the year.

Division of Comparative Biomechanics successfully funds the Carl Gans award

Under the guidance of Robert Dudley and Bob Full, together with the great generosity of Carl's brother Leo and Sandra Gaunt, the Carl Gans endowment met and greatly exceeded the \$25,000 minimum required to fund a new award. As noted below in the summary of endowments, the Gans endowment now stands at approximately \$34,400. This remarkable feat of going from inception to full funding of this award in less than a year sadly comes just as the untimely death of Professor Gans occurred in November. However, this award insures a lasting legacy on his behalf.

Other budget highlights

1. Journal income not only stabilized but increasing

The partnership with Oxford University Press continues to be excellent for SICB. The net income from ICB for fiscal 2009 was \$199,470, up from \$179,798 the previous year and about \$35,000 more than had been conservatively projected in the 2009 budget. The proposed 2011 budget again conservatively includes a net profit of \$183,000.

2. Annual meetings increasingly cost-effective

As noted above, the optimistic projection in the 2009 budget of a profit for the Boston meeting of about \$24,000 was greatly exceeded. The pre-meeting registration for this meeting in Seattle (about 1600 as this is written) also suggests that the meeting will finish solidly in the black. While there is no concerted intention to turn the annual meeting into a profit generating aspect of SICB activities, it is very comforting finally to conclude that the days of having the meeting be a financial drain on the Society are over!

3. Status of endowments

The following depicts the balance of SICB's 10 restricted endowments as of the June 30, 2009 audit of fiscal 2009, together with donations made since that time:

Audit Balance 6/30	Contributions fiscal 2010	Total
Carl Gans Award Fund: \$16,407	\$18,033	\$34,430
George Bartholomew Fund: \$113,500	110	\$113,610
Libbie H. Hyman Fund: \$24,830	625	\$25,455
Dwight D. Davis Fund: \$6,730	45	\$6,775
John A. Moore Lectureship Fund: \$3,155	20	\$3,175
Adrian M. Wenner Fund: \$8,020	0	\$8,020
Dorothy M. Skinner Fund: \$7,784	190	\$7,974
Symposium Enhancement Fund: \$111,370	475	\$111,845
Charlotte Mangum Fund: \$261,751	665	\$262,416
Grants-In-Aid-of-Research (GIAR) Fund: \$179,270	170	\$179,440

4. Student support continues to be a hallmark of SICB

In addition to providing \$24,000 for GIAR, \$6000 for FGST and \$300 per Division for Best Student Paper/Poster awards, (the latter now generously supported by John Wiley & Sons, Inc.), the Society continues waiving registration or providing heavily subsidized housing to student workers. For Seattle at this writing there are 67 students getting waiver of registration and 287 receiving housing for their nominal co-pay of \$75 for 4 nights. Additionally, the 729 students registered for this meeting as either student members or student non-members are receiving an effective subsidy of \$133,770 compared to what they would pay as full members. Of course no one questions how outstanding this level of participation by students, as well as postdocs, is for the Society at large.

Respectfully submitted,

Ron Dimock, Treasurer

Appendix 3.Treas.b

December 16, 2009

Dominion Financial Consultants, LLC
By Matthew Tederick

Portfolio Performance Summary

SICB
1313 Dolly Madison Blvd #402
Mclean, VA 22101

10/31/2007 - 12/15/2009 Inception to date

Beginning Value	1,184,640.36
Net Contributions	25,826.97
Capital Appreciation	(273,069.11)
Income	47,023.78
Management Fees	(19,522.40)
Other Expenses	0.00
Ending Value	<u>964,899.60</u>
Investment Gain	(245,567.73)

10/31/2007 - 12/15/2009 Inception to date

Annual

Time Weighted Return (net)	(8.76)
S&P 500	(13.33)
Difference	4.58

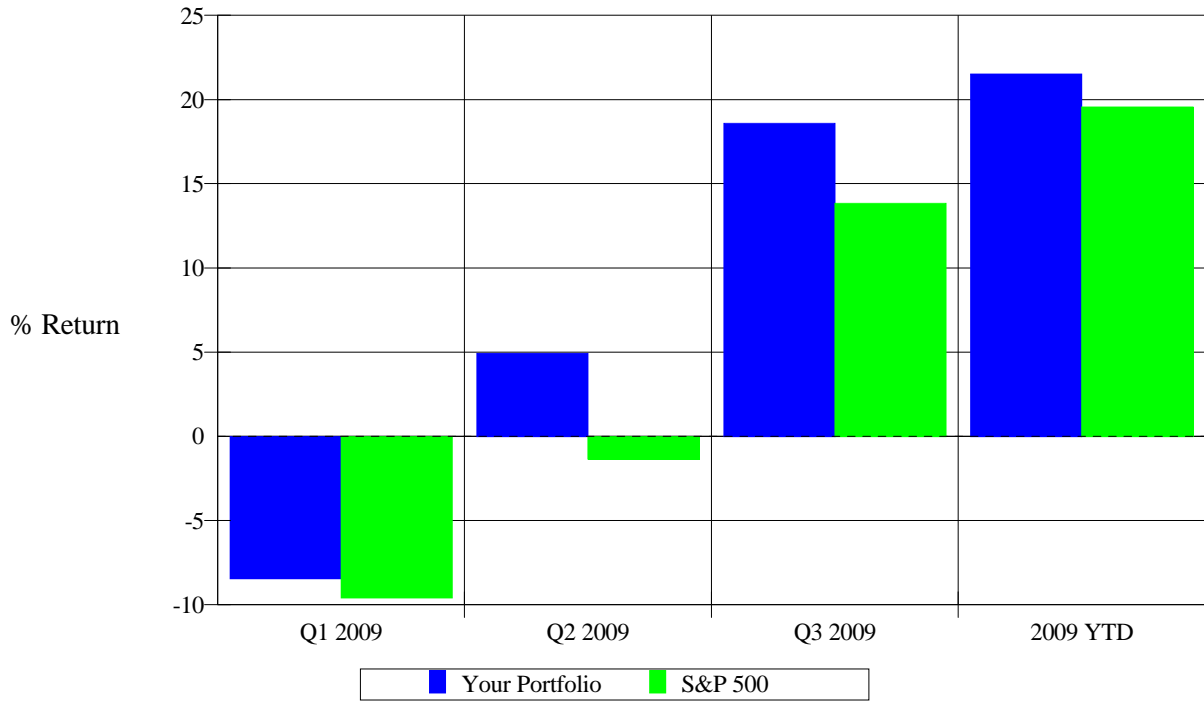
Returns for periods exceeding 12 months are annualized
All returns net of fees

"
 "
 December 16, 2009

Dominion Financial Consultants, LLC
 By Matthew Tederick

Performance vs. Benchmarks

SICB
 1313 Dolly Madison Blvd #402
 Mclean, VA 22101



Total Portfolio	Q1 2009	Q2 2009	Q3 2009	2009 YTD
Time Weighted (net)	-8.43	4.92	18.61	21.52
S&P 500	-9.58	-1.34	13.85	19.57

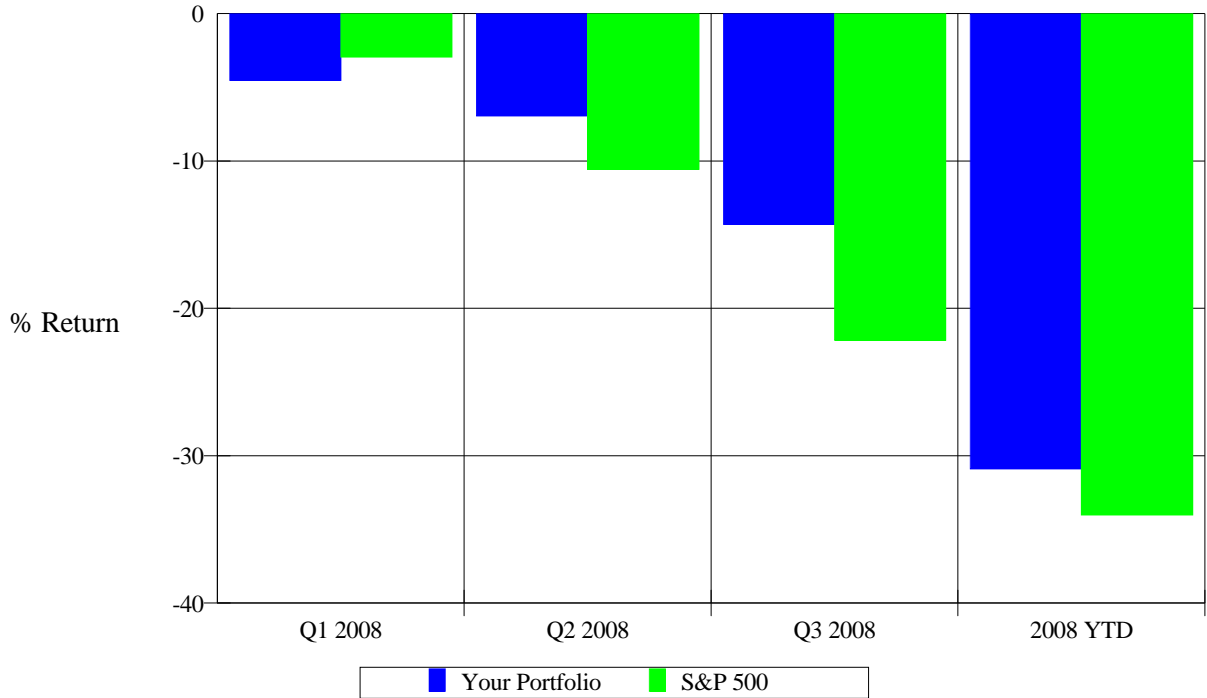
All returns net of fees

"
 "
 December 16, 2009

Dominion Financial Consultants, LLC
 By Matthew Tederick

Performance vs. Benchmarks

SICB
 1313 Dolly Madison Blvd #402
 Mclean, VA 22101



<u>Total Portfolio</u>	<u>Q1 2008</u>	<u>Q2 2008</u>	<u>Q3 2008</u>	<u>2008 YTD</u>
Time Weighted (net)	-4.50	-6.92	-14.29	-30.88
S&P 500	-2.92	-10.54	-22.13	-33.99

All returns net of fees

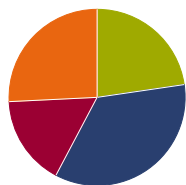
SICB: As of 12 15 09

Portfolio Snapshot

Portfolio Value
\$938,979.75

Benchmark
S&P 500 TR

Analysis 10-31-2009



Asset Allocation	Portfolio Net	Bmark Net
Cash	22.62	0.08
US Stocks	34.66	99.82
Non-US Stocks	16.55	0.10
Bonds	25.33	0.00
Other	0.84	0.00
Total	100.00	100.00

Morningstar Equity Style Box %

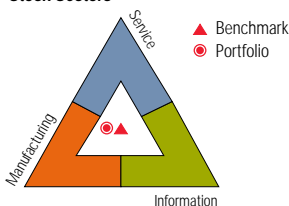
26	19	20	Large	Total Stock Holdings 1965		
8	9	7			Mid	Not Classified % 2
4	3	2			Small	
Value Core Growth			0-10 10-25 25-50 >50			

Morningstar Fixed Income Style Box %

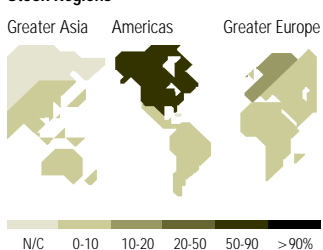
16	72	10	High	Total Bond Holdings 19378		
0	0	0			Med	Not Classified % 2
0	0	0			Low	
Short Interm Long			0-10 10-25 25-50 >50			

Stock Analysis 10-31-2009

Stock Sectors



Stock Regions

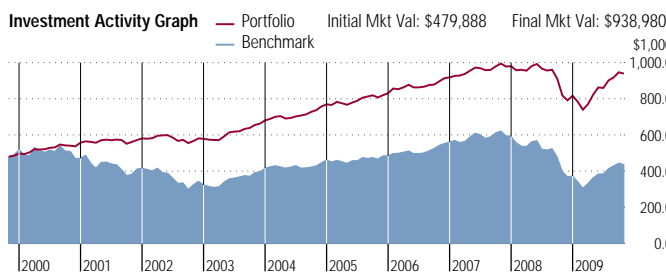


% of Stocks	Portfolio %	Bmark %
Information	15.62	23.40
Software	4.50	4.40
Hardware	4.94	10.10
Media	2.42	2.50
Telecom	3.76	6.30
Service Economy	44.27	39.60
Healthcare	10.65	12.50
Consumer Svcs	7.28	8.60
Business Svcs	5.32	3.30
Financial Svcs	21.02	15.20
Mfg Economy	40.11	37.10
Consumer Goods	11.69	10.90
Industrial Mtrls	13.59	10.80
Energy	12.23	11.80
Utilities	2.60	3.70
Not Classified	0.00	0.00

% of Stocks	Portfolio %	Bmark %
Americas	70.65	100.00
North America	68.90	99.90
Central/Latin	1.75	0.10
Greater Europe	18.66	0.00
United Kingdom	4.02	0.00
Europe-Developed	12.68	0.00
Europe-Emerging	1.03	0.00
Africa/Middle East	0.94	0.00
Greater Asia	10.66	0.00
Japan	3.30	0.00
Australasia	0.66	0.00
Asia-Developed	5.29	0.00
Asia-Emerging	1.41	0.00
Not Classified	0.02	0.00

Performance 10-31-2009

Investment Activity Graph



Trailing Returns	3 Mo	1 Yr	3 Yr	5 Yr	10 Yr
Pre-Tax Portfolio Return %	4.20	14.74	1.56	4.96	6.94
Benchmark Return %	5.48	9.80	-7.02	0.33	-0.95
+/- Benchmark Return %	-1.28	4.94	8.58	4.62	7.89

Time Period Return	Best %	Worst %
3 Months	16.62 (Mar 09-May 09)	-17.64 (Sep 08-Nov 08)
1 Year	23.22 (Apr 03-Mar 04)	-23.00 (Mar 08-Feb 09)
3 Years	14.74 (Apr 03-Mar 06)	-4.64 (Mar 06-Feb 09)

Portfolio Yield	Yield %
Trailing 12 Month	1.66

Performance Disclosure

The performance data quoted represents past performance and does not guarantee future results. The investment return and principal value of an investment will fluctuate thus an investor's shares, when redeemed, may be worth more or less than their original cost. Current performance may be lower or higher than return data quoted herein. For performance data current to the most recent month-end, please visit <http://advisor.morningstar.com/familyinfo.asp>.

See Disclosure Page for Standardized Returns.

Holdings 10-31-2009

Top 10 Holdings out of 26

- Cash: Money Market - Taxable
- PIMCO Total Return Instl
- Dodge & Cox Income
- Forester Value
- Parnassus Equity Income - Inv
- ICON Energy
- Cash: 3 Month T-bill
- Dodge & Cox International Stock
- Vanguard Short-Term Bond Index
- Third Avenue Value

Ticker	Type	Holding Value \$	% Assets
—	PY	147,109.98	15.67
PTTRX	MF	72,353.44	7.71
DODIX	MF	69,546.19	7.41
FVALX	MF	66,845.23	7.12
PRBLX	MF	52,288.93	5.57
ICENX	MF	39,526.61	4.21
—	PY	37,732.55	4.02
DODFX	MF	37,670.50	4.01
VBISX	MF	35,925.23	3.83
TAVFX	MF	29,138.07	3.10

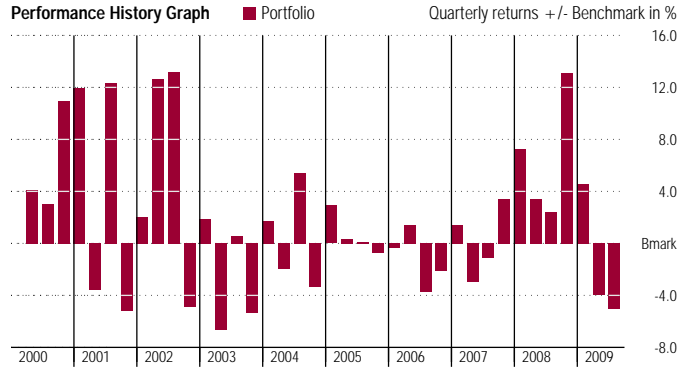
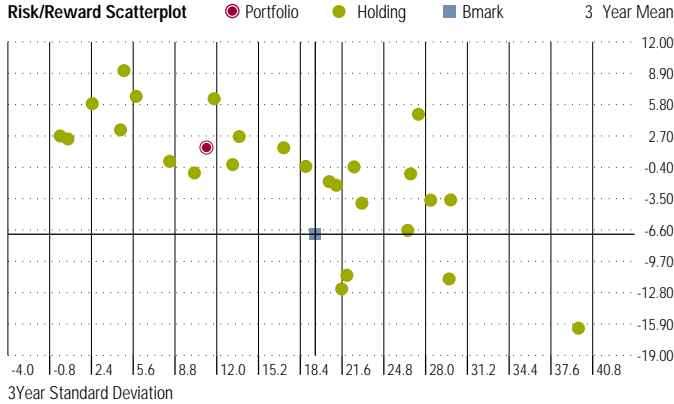
SICB: As of 12 15 09

Portfolio Snapshot

Portfolio Value
\$938,979.75

Benchmark
S&P 500 TR

Risk Analysis 10-31-2009



Risk and Return Statistics	3 Year		5 Year		10 Year	
	Portfolio	Bmark	Portfolio	Bmark	Portfolio	Bmark
Standard Deviation	11.21	19.55	9.14	15.92	7.61	16.14
Mean	1.56	-7.02	4.96	0.33	6.94	-0.95
Sharpe Ratio	-0.02	-0.39	0.25	-0.08	0.54	-0.16

MPT Statistics	3Yr Portfolio	5Yr Portfolio	10Yr Portfolio
Alpha	4.04	3.02	5.16
Beta	0.55	0.55	0.42
R-squared	93	90	78

Fundamental Analysis 10-31-2009

Asset Allocation

	Portfolio % Net	Portfolio % Long	Portfolio % Short
Cash	22.62	30.53	7.91
US Stocks	34.66	34.78	0.12
Non-US Stocks	16.55	16.83	0.28
Bonds	25.33	25.63	0.30
Other	0.84	1.32	0.47
Total	100.00	109.09	9.09

Type Weightings

	Portfolio	Bmark
% of US Stocks		
High Yield	3.29	3.25
Distressed	2.04	1.33
Hard Asset	19.76	13.04
Cyclical	19.59	33.35
Slow Growth	15.96	12.92
Classic Growth	17.33	18.65
Aggressive Growth	16.02	13.52
Speculative Growth	3.92	3.22
Not Available	2.08	0.72

Market Maturity

	Portfolio	Bmark
% of Stocks	95.30	100.00
Developed Markets	4.70	0.00
Emerging Markets	0.00	0.00
Not Available	0.00	0.00

Valuation Multiples

	Portfolio	Bmark
Price/Earnings	14.50	16.70
Price/Book	1.78	2.20
Price/Sales	0.98	1.10
Price/Cash Flow	7.13	8.50

Profitability

	Portfolio 2008	Bmark 2008
% of US Stocks		
Net Margin	8.54	8.62
ROE	14.39	15.86
ROA	5.06	6.21
Debt/Capital	35.75	37.12

Geometric Avg Capitalization (\$Mil)

Portfolio	13,285.13
Benchmark	41,517.00

Credit Quality % of Bonds

AAA	64.49
AA	5.22
A	13.44
BBB	8.98
BB	1.83
B	0.43
Below B	2.43
NR/NA	3.19

Interest Rate Risk Portfolio

Maturity	7.25
Duration (total portfolio)	4.87
Avg Credit Quality	AA

Fund Statistics

Potential Cap Gains Exposure	-5.71
Avg Net Expense Ratio	0.73
Avg Gross Expense Ratio	0.76

SICB: As of 12 15 09**Portfolio Snapshot****Portfolio Value**
\$938,979.75**Benchmark**
S&P 500 TR**Non-Load Adjusted Returns****Total 26 holdings as of 10-31-2009**

	Type	Holdings Date	% of Assets	Holding Value \$	7-day Yield	1Yr Ret %	3Yr Ret %	5Yr Ret %	10Yr Ret %	Max Front Load %	Max Back Load %
Cash: Money Market - Taxable	PY	—	15.67	147,110	—	0.34	2.52	2.79	2.64	—	—
PIMCO Total Return Instl - PTTRX	MF	06-2009	7.71	72,353	—	20.11	9.16	6.84	7.58	—	—
Dodge & Cox Income - DODIX	MF	09-2009	7.41	69,546	—	22.41	6.61	5.29	6.67	—	—
Forester Value - FVALX	MF	06-2009	7.12	66,845	—	10.49	2.64	2.93	5.13	—	—
Parnassus Equity Income - Inv - PRBLX	MF	09-2009	5.57	52,289	—	12.73	1.53	5.29	6.53	—	—
ICON Energy - ICENX	MF	06-2009	4.21	39,527	—	16.36	4.84	12.61	18.77	—	—
Cash: 3 Month T-bill	PY	—	4.02	37,733	—	0.18	2.42	3.02	2.97	—	—
Dodge & Cox International Stock - DODFX	MF	09-2009	4.01	37,671	—	36.90	-3.65	6.98	—	—	—
Vanguard Short-Term Bond Index - VBISX	MF	07-2009	3.83	35,925	—	8.53	5.89	4.41	5.12	—	—
Third Avenue Value - TAVFX	MF	07-2009	3.10	29,138	—	27.63	-6.64	2.60	7.15	—	—
Muhlenkamp - MUHLX	MF	06-2009	3.09	28,985	—	15.05	-11.08	-2.95	4.70	—	—
FMI Provident Trust Strategy - FMIRX	MF	09-2009	3.08	28,914	—	14.55	-0.13	5.86	1.83	—	—
Harbor International Inv - HIINX	MF	09-2009	2.57	24,127	—	28.36	-1.05	9.31	7.30	—	—
Hussman Strategic Growth - HSGFX	MF	06-2009	2.55	23,963	—	-2.46	0.19	2.62	—	—	—
Artisan International Value - ARTKX	MF	09-2009	2.53	23,772	—	29.56	-1.82	8.07	—	—	—
Scout International - UMBWX	MF	06-2009	2.52	23,703	—	28.19	-0.36	8.24	5.15	—	—
Perkins Mid Cap Value J - JMCVX	MF	06-2009	2.46	23,133	—	20.34	-0.31	5.76	11.64	—	—
Gabelli Small Cap Growth AAA - GABSX	MF	06-2009	2.43	22,788	—	14.11	-2.18	4.72	8.53	—	—
Gateway A - GATEX	MF	08-2009	2.42	22,732	—	0.87	-0.96	2.57	2.82	5.75	—
Vanguard Long-Term Bond Index - VBLTX	MF	07-2009	2.35	22,022	—	26.55	6.38	5.53	7.74	—	—
Weitz Value - WVVALX	MF	06-2009	2.19	20,610	—	13.08	-12.43	-3.98	1.09	—	—
Gabelli ABC Advisor - GADVX	MF	06-2009	2.17	20,393	—	6.92	3.30	5.02	4.75	—	—
Third Avenue International Value - TAVIX	MF	07-2009	2.16	20,320	—	33.87	-3.95	4.97	—	—	—
DFA Real Estate Securities I - DFREX	MF	08-2009	1.82	17,069	—	0.98	-16.31	-0.84	9.23	—	—
Keeley Mid Cap Value A - KMCVX	MF	09-2009	1.53	14,342	—	1.72	-11.44	—	—	4.50	—
PIMCO Commodity Real Ret Strat D - PCRDY	MF	06-2009	1.49	13,972	—	18.83	-3.63	-0.04	—	—	—

Performance Disclosure

The performance data quoted represents past performance and does not guarantee future results. The investment return and principal value of an investment will fluctuate thus an investor's shares, when redeemed, may be worth more or less than their original cost. Current performance may be lower or higher than return data quoted herein. For performance data current to the most recent month-end, please visit <http://advisor.morningstar.com/familyinfo.asp>.

See Disclosure Page for Standardized Returns.

Educational Council Report

Bob Podolsky, Chair

At the 2008 SICB annual meeting in Boston, the Educational Council (EC) began discussions of several possible educational initiatives for the society. The ideas for these initiatives were generated during a conference sponsored by AAAS and HHMI on the role of professional societies in undergraduate education. During a lively discussion of the council and other interested parties in Boston, it became apparent that decisions about how to proceed with several of the initiatives would benefit from broader society input, particularly from students.

This year, the EC took advantage of the SICB Member survey to gain such information by designing and including several questions. A summary of the questions, answers, and comments relevant to education and student support are included with this report. Based on these comments, the EC has plans to discuss the following initiatives at the 2010 Seattle meeting.

- 1) Initiation of an annual "Teaching and Learning" workshop
- 2) Recommendation of a "broader impacts" statement in symposium applications, promoting the inclusion of educational goals
- 3) Day of arrival undergraduate poster display
- 4) An initiative to better advertise, staff, and encourage submissions to the SICB Digital Library in key subject areas
- 5) Creation of a SICB webpage with links to course web pages, organized by course topic
- 6) Initiation of a "Meal with a Biologist" program

SICB MEMBER SURVEY 2009: Education-related questions

INSTITUTIONAL CHARACTERISTICS

6. Indicate the selection below that best describes your institution with respect to programs in biology or programs where students can study biology.

	Percent	Count
Only undergraduate programs	11.40%	97
Undergraduate and master's programs, but no doctoral programs	11.50%	98
Undergraduate, master's and doctoral programs	72.50%	616
Not Applicable	4.60%	39
<i>ANSWERED BY</i>		850

7. Which best describes the size of your institution? The categories below include undergraduate and graduate students.

less than 2,500	8.90%	76
from 2,501 to 5,000	7.20%	61
from 5,001 to 10,000	12.10%	103
from 10,001 to 20,000	24.40%	207
greater than 20,000	44.00%	374
not applicable, I am not at an academic institution	3.40%	29
<i>ANSWERED BY</i>		850

8. Which best describes your institution?

primary expectations in research productivity	36.20%	308
balanced research and teaching expectations	49.20%	418
primary expectations in teaching	12.10%	103
other	0.70%	6
not applicable	1.80%	15
Other (please specify)		30
<i>ANSWERED BY</i>		850

QUESTIONS FOR UNDERGRADUATES ONLY

1. When presenting a poster at the annual meeting, would you be in favor of a special, informal poster display for undergraduates on the evening of arrival? (This display would be in addition to your participation in a regular poster session. The idea would be to highlight the work of undergraduates and to allow you to meet and see each other's work early in the meeting.)

Yes	90.90%	30
No	9.10%	3
<i>ANSWERED BY</i>		33

2. When presenting a poster at the annual meeting, would you be in favor of having a special designation on your poster indicating that you are an undergraduate student?

Yes	57.60%	19
No	42.40%	14
<i>TOTAL</i>		33

3. Divisional awards for best student papers/posters do not distinguish between undergraduate students and graduate students. Would you be in favor of establishing paper/poster awards specifically for undergraduate students?

Yes, even if I were no longer eligible for the student award in my division	60.60%	20
Yes, but only if I were still eligible for the student award in my division	18.20%	6
No	9.10%	3
I have no opinion one way or the other	12.10%	4
<i>ANSWERED BY</i>		33

4. What is your most likely professional direction following college?

graduate school in a biological field	60.60%	20
graduate school in another field	3.00%	1
medical school	6.10%	2
other health profession	18.20%	6
unknown	9.10%	3
other	3.00%	1
<i>ANSWERED BY</i>		33

QUESTIONS FOR GRADUATE STUDENTS & POSTDOCS ONLY

1. Which best describes the professional situation to which you aspire?

large university with primary expectations in research productivity	25.90%	97
large university with balanced research and teaching expectations	32.00%	120
small college or university with balanced research and teaching expectations	27.70%	104
college or university with primary expectations in teaching	6.10%	23
other	8.30%	31
<i>ANSWERED BY</i>		375

1. Annual Meeting Support. Check programs from which you have received support.

Charlotte Mangum Student Support (Student-in-Training & Graduate Student members)	96.60%	143
Dorothy M. Skinner Award (female doctoral candidates & postdocs)	8.80%	13
<i>ANSWERED BY</i>		148

2. Research Support. Check programs from which you have received support.

Grants in Aid of Research (GIAR) (Graduate Student Members)	81.00%	64
Fellowship of Graduate Student Travel (FGST) (Graduate Student Members)	26.60%	21
Libbie H. Hyman Memorial Scholarship (students)	2.50%	2
<i>ANSWERED BY</i>		79

3. Have you ever used the "career" and "jobs & fellowships" links on the SICB web site (these links are found on the "For Students" TAB on the SICB web site)?

Career Information	21.90%	389
Jobs & Fellowships	31.80%	384
<i>ANSWERED BY</i>		393

SICB EDUCATIONAL COUNCIL ACTIVITIES

4. The Educational Council is considering a recommendation that each symposium try to involve an educational component, which could be fulfilled by including a talk, parts of talks, or round-table discussion of approaches to teaching about the topic, or by contributions to the SICB digital library. Would you like to see the mission of symposia move in that direction?

Yes	55.60%	440
No	44.40%	351
<i>ANSWERED BY</i>		791

5. The Educational Council is considering instituting a workshop at each annual meeting on “Teaching and Learning X” where “X” could be any broad field designated by the organizers and participants. The idea would be to share ideas and active teaching methods, with products potentially feeding into the SICB-DL. Check all that apply below.

I would be interested in attending such a workshop in my field.	94.70%	647
I would be interested in presenting in such a workshop in my field.	24.00%	164
I might be interested in organizing such a workshop in my field.	14.90%	102
<i>ANSWERED BY</i>		683

1. How often have you participated in K-12 outreach activities?

rarely if ever	35.60%	286
once every few years	28.10%	226
once a year	18.40%	148
more than once a year	17.90%	144
<i>ANSWERED BY</i>		804

SICB DIGITAL LIBRARY (SICB-DL)

2. Have you ever used any digital library (DL) to find images, movies, exercises, or other content for teaching?

Yes	50.90%	407
No	49.10%	392
<i>ANSWERED BY</i>		799

3. If the content in your teaching area were increased, how likely would you be to consult and use material from the SICB-DL? (Scale of 1 to 5 where 1 = very likely and 5 = very unlikely)

very likely 1	35.50%	275
2	25.70%	199
3	26.50%	205
4	6.20%	48
very unlikely 5	6.10%	47
<i>ANSWERED BY</i>		774

**4. What teaching areas of the SICB-DL would you most like to see developed?
(up to 3 responses per person)**

Physiology	20.78%	107
Evolution & systematics	14.95%	77
Anatomy/morphology	9.51%	49
Ecology	7.57%	39
Invertebrate biology	7.18%	37
Behavior	6.80%	35
Biomechanics	6.80%	35
Development/evo-devo	5.63%	29
Vertebrate biology	5.63%	29
Endocrinology	3.69%	19
Biodiversity	3.30%	17
Cell biology	2.52%	13
Biochemistry	1.55%	8
Neurobiology	1.55%	8
Marine biology	1.55%	8
Immunology	0.97%	5
<i>ANSWERED BY</i>		317

5. What types of material would be most useful to you? (Scale of 1 to 5 where 1 = most useful, 5 = least useful)

	average score	count
images	1.68671	715
active learning exercises for lecture	1.85369	704
lab exercises	1.97159	704
movies	1.98161	707
clicker questions	3.34269	677
<i>ANSWERED BY</i>		724

6. Which of the following have prevented your contributing material to the SICB digital library?

I don't know enough about it.	75.40%	583
Not enough time.	14.00%	108
Would be difficult for me to generate material.	4.40%	34
Not interested.	3.00%	23
Not enough incentives (e.g., recognition of publications, financial reward, etc.).	2.50%	19
I have already contributed!	0.80%	6
<i>ANSWERED BY</i>		773

SICB Member Survey 2009: comments related to education/student support

Comments in **bold** are directly related to educational initiatives to be discussed

5.	I commend all the work that has been done to increase the emphasis on educational resources and teaching. If these are to work effectively I think it might be nice to add a half day to the workshop for focusing on the educational aspects. When the educational and scientific symposia co-occur, I will always opt for the scientific symposia!
13.	Additional sessions on teaching and history of biology would be great.
17.	I would be interested in SICB initiating some sort of 'meal with a scientist' program. This is something that several societies I am in have. This is basically set up so that senior members of the society can volunteer to meet with students and students can pick who they might like to have breakfast or lunch with. It gives students a chance to meet with scientists in a student group which I find is often a more relaxed setting. Each individual is responsible for paying for his or her own food but the benefits are having chunk of time to meet with SICB members that may be harder to approach outside of this setting in a friendly setting with other students. I am very interested in helping initiate this program if there is any chance that others find it a worth-while suggestion and I might be of assistance.
21.	very student friendly and supportive meeting. thanks for the great experiences and financial support. I look forward to bringing my own students to the meeting.
22.	The push to making everything educational rather than science is disconcerting. Education is important, but so is the science. And, the science is not just important because of the education. We should be a leader in organismal science, and our symposia should be the leading edges of our field in science. Complimentary educational sessions and symposia would be nice, but forcing all of the science based symposia to have an education representation is not particularly useful for either.
26.	In Los Angeles in 1993, I cosponsored a symposium on the teaching of zoology and the freshman year. The all day session was scheduled 1) on the last day, 2) in a room that might seat 20 people, and 3) at another hotel! At my insistence, we moved to a ballroom in the main hotel and I counted no fewer than 100 people in attendance at any given moment during this session on the last day of the meeting. To this day this 1993 symposium remains one of the best attended symposia devoted to teaching that I have seen at any ASZ/SICB meeting since the SAAWOK treasured sessions. The 1993 events get even more interesting. When we proposed this symposium in 1992, the approving committee wanted to make sure that we understood that under no circumstances would the results of the symposium be printed in any society publication. So nothing was printed. Unfortunately, I have seen little deviation from this disappointing support we received in 1993 in regard to education. OK, you might think, it has been a while. But I have not seen SICB devoting any significant energy to education activities in these past 16 years. In Boston, this year, my 10 undergraduate students from Illinois showed up at the luncheon for students. Fortunately, someone showed up and told them that 1) nothing was planned and 2) there is no lunch. Quite simply, an event for students printed in the program had nothing planned but a space and time. So many of my students moved on to a graduate function elsewhere or simply left with the message that students are a very low priority at SICB. How could I argue otherwise? These same students of mine got to see how posters and the many students who prepared

them were treated in the dim basement with low hanging pipes.

We last had a SAAWOK in 1994 (at least according to the SICB digital library and my memory). It appears from the questions that some renewed interest in promoting instruction is emerging. WONDERFUL if this is true. Let us treasure the students that are our future. Let us value their work. Let us treat them with the same respect devoted to posters as symposia and original papers.

I just returned from the University of Chicago Evolution conference. So much is new. It seems to me that updates on the SAAWOK from the 1980's are most appropriate. Perhaps that might be considered?

29. Just a note on the question about educational content in regular symposia. I support including such content, but I emphatically don't like requiring it. That invites disdain, trivialization, and so forth.

I strongly feel that we need more subject areas in the digital library, quite aside from always needing more contributions to the one we have.

30. The other meeting I attend on a semi-regular basis is Evolution, but SICB is most important to me because I am on faculty at a liberal arts college and think that SICB holds more appeal for undergraduates, both because of the content of talks/poster and also because of the excellent student support that SICB offers.

31. I've been to every meeting of the society for at least 34 years. So I've had a perspective that has changed from being a graduate student member to becoming an elder member. I've watched with pleasure growth in the numbers of young members. I am very happy about that. It speaks well for the vision and efforts of the officers who have supported initiatives that support these members. I see strong groups forming among these graduate students and young faculty and this makes me optimistic for the longevity of the society. I believe it is important to bring these young folks into positions where they can contribute their fresh ideas to the running of the society.

34. There is currently travel funding available to graduate students for presenting at meetings. As a professor at a solely undergraduate institution with limited funds, it would be nice to have some travel money also available to professors in my situation.

36. I love SICB. Great place to take students for a first conference. Always plenty of interesting symposia.

40. **For an organization that almost failed, everyone has done a wonderful job of keeping it strong. The emphasis on students is a major strength -- would be good to see that extended to undergrads and undergraduate teaching.**

43. **The idea about educational content to the symposia is interesting... But again, the meeting schedule is so tight, that if you try to wedge in one more thing, people may have to give up eating or sleeping!**

50. There is no feedback on grant proposals (e.g., GIAR, FGST). This makes improving one's grant writing very difficult. Clearly, the proposals are reviewed on some criteria. Would it be too much to ask to see how one's proposal met these criteria?

55. **On the surface, the idea of teaching modules out of symposia sounds like a good one, but often the symposia are so technical that except in a graduate level class, I don't think they would be well used. Also, the symposia organizers are doing so much already that adding another task to the list (even as an optional suggestion) doesn't seem fair.**

62. I think its role in preparing graduate students for professional careers cannot be understated. It is the Society that makes professional connections, initiates many postdoc connections and plays a key role in scouting for future faculty in intergrative biology domains. This is one function of the society that seems unmeasured by the current survey. It would be nice to know how the society can improve upon an already excellent reputation for involving students in its meetings.

66. I have been grateful for the student support program, which has allowed me to attend regularly when I may otherwise have missed some meetings. I'm finishing my PhD soon, but I urge you to continue the program for the future!

76. I think its great that SICB is thinking about higher education - go BIO2010!!!

97. I have written papers for (then American Zoologist) and organized symposia in the past. I would anc could in the future again, especially if education and outreach were a component mixed with the research.

104. Please do have more educational aspects to the meetings. Scholarship of teaching and learning is important in my work at an undergraduate institution. Educational workshops where sharing active learning and best practices in labs would be valuable. Ways to build teaching and research educational networks through the divisions would be excellent. Though there are undergraduate meetings, these typically do not involve close colleagues in the sciences. SICB can provide sharing of information on both teaching and subject material.

108. Concerning the question about contributing to the digital library: The first answer option was ambiguous: did you mean that one would not know about making digital contents, or did you mean not knowing about the digital library. As far as I am concerned, I was not aware that the digital library is available and that I can contribute to it. Please advertise this more, I would certainly contribute to it!

110. I'm currently teaching at an arts and communications college and have felt that one area that SICB could improve on is its educational focus. So many of the scientists who come to SICB are excellent teachers but the educational talks and posters are very hit or miss from year to year. I would like to see an effort to continue to improve how we teach science and communicate with the general public and not just the K-12 audience.

INTEGRATIVE AND COMPARATIVE BIOLOGY, REPORT 2009

By Harold Heatwole
Editor in Chief

SICB SYMPOSIA PUBLISHED IN VOLUME 49 (2009)

- ❖ **S1 – Sensory Biomechanics.** Symposium Organizers: Matt McHenry and Sanjay Sane
- ❖ **S2 – The Biology of the Parasitic Crustacea.** Symposium Organizers: Jeffrey Shields and Christopher Boyko
- ❖ **S3 – Hormonal Regulation of Whole-Animal Performance: Implications for Selection.** Symposium Organizers: Jerry Husak, Duncan Irschick, Ignacio Moore
- ❖ **S4 – Insect Evolution.** Symposium Organizers: Tim Bradley and Adriana Briscoe
- ❖ **S5 – Cell-Cell Signaling Drives the Evolution of Complex Traits.** Symposium Organizer: John Torday
- ❖ **S6 – PharmEcology: A Pharmacological Approach to Understanding Plant-Herbivore Interactions.** Symposium Organizer: Jennifer Sorensen-Forbey
- ❖ **S7 – Biomaterials: Properties, Variation and Evolution.** Symposium Organizers: Brook Swanson and Mason Dean
- ❖ **S8 – Genomics and Vertebrate Adaptive Radiation: A Celebration of the First Cichlid Genome.** Symposium Organizers: Darrin Hulsey and Suzy Renn
- ❖ **S9 – Psychoneuroimmunology Meets Integrative Biology.** Symposium Organizer: Lynn Martin
- ❖ **S10 – Evolution of Mechanics Controlling Timing of Breeding in Animals.** Symposium Organizers: Michaela Hau and Thomas Hahn

NUMBERS OF PAPERS IN 2009 SICB SYMPOSIA

SYMPOSIUM	PAPERS PRESENTED	PAPERS PUBLISHED
S1	11	5
S2	12	5
S3	11	9
S4	8	one summary paper
S5	11	5
S6	12**	5**
S7	12	7
S8	12	5
S9	11	5
S10	11	8
TOTAL	111	55
*Four short introductions included in totals		
**Speakers combined papers		

NUMBER OF AUTHORS BY COUNTRY

❖ Australia	5
❖ Belgium	6
❖ Brazil	2
❖ Canada	12
❖ Chile	1
❖ China	1
❖ Finland	1
❖ Germany	15
❖ Greece	1
❖ India	1
❖ Italy	2
❖ Japan	4
❖ Netherlands	1
❖ New Zealand	2
❖ Portugal	3
❖ Russian Federation	1
❖ Switzerland	2
❖ UK	7
❖ US	192



PROJECTED FOR 2010

- ❖ Ten Regular Symposia – 108 papers
- ❖ One Late-Breaking Symposium – 11 papers

Student Support Committee Report

Sheila Patek, Chair

Arising from discussions at last year's SICB Student Support Committee meeting, I undertook several initiatives to both streamline and update the review process.

1) I streamlined the grant guidelines on the web interface to make it easier for students to figure out the main issues. I hope to improve this again during the coming year, as there remained several points of confusion (based on emails from the students).

2) We developed a completely online interface through which proposals could be reviewed, ranked and evaluated. The entire proposal was visible on one page with a scoring scheme and a box for comments to the right of the proposal. Thus, the cumbersome process of moving between files was removed. It also allowed me to see the status of the reviews as they were written and scored.

2) We moved committee interactions and proposal assignments from the many burdensome emails to entirely confined to the wiki format in Google Docs. Thus, reviewers could see their assignments and all other assignments on a Google Docs spreadsheet as well as edit this document remotely. They were also able to write comments and suggestions on a Google Docs word document that other reviewers could read and edit.

3) We removed letters of recommendation from the required components of the grant, because, in previous rounds, it was evident that all (at least in my experience) letters from faculty were positive, and thus did not contribute to differentiating among proposals. Letters also added substantially to the review time.

4) In recognition of many recent studies suggesting bias in review procedures, we took the first step toward making the review process anonymous. Student identity was not visible to the reviewers and proposals were simply assigned an ID number. This system needs some revision, because some proposals contained identifying information. We will improve this during the next round.

5) For this round of grants, we received a total of 153 proposals, 126 Grants in Aid of Research and 27 Fellowship for Graduate Student Travel. Given the total of 9 reviewers (plus myself), I assigned the reviewers two proposals each, making the total load 34 proposals per reviewer. I then reviewed approximately 60 proposals from both programs, providing a third review to the top-ranked proposals from the initial reviews.

6) The review process is now complete and awards will be determined shortly. We will use our annual meeting at the SICB conference to discuss additional improvements to the program, such as involving a student reviewer of proposals and the possibility of providing brief feedback to the students.

Appendix 5.Finance.a. Proposal for “The Carl Gans Award”

Division of Comparative Biomechanics Society for Integrative and Comparative Biology

An annual prize may be given either to an outstanding young investigator for distinguished contributions to the field of comparative biomechanics (eligible candidates are those who have completed their doctorate within the past seven years), or to any investigator for the single most significant contribution published in the preceding calendar year to the literature of comparative biomechanics, including research papers, review articles, and published books. The formal title for this award is "The Carl Gans Award," in recognition of Carl Gans' scientific career and editorial contributions to animal morphology, biomechanics, and functional biology. The Chair of the Division shall appoint an Award Committee consisting of at least three divisional members with diverse interests to serve as judges. The Chair of the Division will designate one of the members as the chair of the Award Committee. Committee members will normally serve for no more than three years, with at least one member being replaced each year. Candidates may either apply directly or be nominated for either type of award, and must be members of SICB. Past winners of the Bartholomew Award are ineligible to compete for the Gans Award. Details for the competition will be announced in the spring newsletter of each year. Applicants shall submit to the Chair of the Award Committee either a short description of their work together with selected reprints (outstanding young investigator), or a copy of either a research paper, review article, or book (best contribution to the literature). A curriculum vitae must also be submitted, along with three letters of support. Nominators must arrange for these same materials (except that only two additional letters of recommendation are required) to be submitted to the Committee. The Committee may recommend for approval one candidate to the Chair of the Division, who may authorize reimbursement of appropriate expenses incurred by the winner in attending the annual SICB meeting. The awardee will be presented with a certificate signed by all current Divisional officers. According to available funds, the Chair may also authorize a research award to further the following themes: 1) general field and laboratory work in comparative biomechanics, 2) collaborative work with scientists in Israel, 3) travel to visit Ben-Gurion University (Sde-Boqer Campus) and the Gans Library, and to conduct fieldwork in Israel, and 4) support of collaborative international research. These research themes are in recognition of Carl Gans' efforts to promote and foster international collaborations among scientists, as well as his ability to show that all animals are interesting.

Appendix 5.Finance.b, Proposal to Establishment the Howard A. Bern Lecture Fund

Name

The fund shall be known as the “Howard A. Bern Lecture Fund” (hereafter referred to as the “fund”).

Purpose

The Howard A. Bern Lecture was established as a Society of Integrative and Comparative Biology (SICB) society-wide plenary address in 2002 to honor Professor Bern’s outstanding scientific contributions as a founder and leader of the field of comparative endocrinology and to recognize his service to the society.

The purpose of the fund is to support the lecture by a distinguished comparative endocrinologist at the annual SICB meeting.

Management

The fund is established as a restricted endowment fund and will be managed under applicable SICB bylaws and policies. Proceeds from the fund will be disbursed to support activities at set forth below.

Lectureship Selection

The Howard A. Bern Lecture will be given by a scientist who has made significant contributions to the field of comparative endocrinology. Scientists from around the world are eligible, and affiliation with SICB is not required.

The Chair of the Division of Comparative Endocrinology (DCE) shall appoint a Bern Lecture Committee consisting of at least three DCE members, and designate one of the members as Chair of the committee. Committee members will normally serve no more than three years, with at least one member being replaced each year. The committee will solicit (self nominations will be accepted) and evaluate nominations from the international comparative endocrinology community. After consideration of the publication record and other contributions of the nominees, the committee shall recommend one candidate to the Chair of DCE for approval. The selected individual will be invited to present the Howard A. Bern Lecture at the annual SICB meeting.

Activities to be Supported by the Fund

The DCE Chair may authorize reimbursement of appropriate expenses incurred by the Lecturer for attending the meeting, including the cost of transportation, lodging, registration, and meals. The DCE Chair also may authorize a recognition banquet and a cash prize.

Public Affairs Committee Report

Peter deFur, Chair

The PAC was involved in the following efforts in 2009:

- Follow-up to the 2009 annual meeting and the start of the COPUS Year of Science
- Darwin birthday items
- Follow-up to the decision to hold the 2011 annual meeting in Salt Lake City and not New Orleans because of the official policy stance regarding teaching evolution in each state
- New PAC membership
- Represent SICB on AIBS policy group
- Invitations to science reporters for the 2010 annual meeting in Seattle

The 2009 meeting launched the Year of Science that has been spearheaded by the AIBS Committee on the Public Understanding of Science (COPUS). The PAC worked with COPUS on press immediately following the 2009 annual meeting. Following the 2009 Annual Meeting, SICB released a joint press release with COPUS launching the Year of Science.

In January and February 2009, the PAC prepared and made available to the SICB members various materials that would be useful in preparing letters to the editor and Op/Ed pieces regarding Darwin's birthday, evolution, teaching science, etc. These materials were placed on the SICB web site for members only. PAC chair, Peter deFur did have an Op/Ed piece on Darwin's birthday run in early February in the Richmond Times Dispatch.

The action by the Executive Committee to hold the 2011 Annual Meeting in Salt Lake City dominated the agenda of the PAC for the first part of the year and generated substantial press and several actions for the remainder of 2009. The PAC drafted a letter for Rich Satterlie to send to Gov. Jindal informing him of the decision to not meet in New Orleans, then drafted a press release for the SICB office to distribute, and both the letter and press release were sent to the AIBS policy office for wider distribution.

The press response to the letter to Gov Jindal was more than hoped. Calls came in from all over the country, with President Rich Satterlie spending substantial time ably fielding reporter's calls and questions. The press stories were largely positive in terms of representing the SICB position and justification. However, Rich Satterlie and the SICB office did receive nasty emails from some Louisiana residents. On the whole, it seemed that more positive than negative response came from the press and the public regarding the announcement.

In the aftermath of the press and public response to SICB's position over teaching evolution in Louisiana, the SICB Executive Committee decided to pursue positive actions in Louisiana over the issue. The principle entity supporting science/evolution education in the public curriculum seems to be the Cain Center at LSU; a number of the faculty there are active in supporting science education and opposing the insertion/imposition of religion into the science curriculum in the state. The Cain Center has already initiated a workshop program in which SICB could participate and join in their efforts in Louisiana. Summertime is when they hold workshops to be

more convenient to the science teachers. The PAC chair is in communication with Brenda ---- Nixon of the Cain Center to discuss details and logistics of such a cooperative effort.

New PAC members were appointed by Rich Satterlie:

Jake Socha
Tony Pires
Eric Tytell
Andrea Ward

PAC chair Peter deFur is the SICB representative to the AIBS policy committee that operates via email with a small number of conference calls each year. The AIBS policy committee distributes information of interest to all AIBS member societies, coordinates efforts such as sign-on letters, and maintains resources for AIBS members on topics such as funding, science education and national policy shifts. The latest national policy issue is a proposal by the Obama Administration to require open-access publication of all federally-funded grant results (not unlike the practice at NIH, according to AIBS), in keeping with a policy of “openness in government.” This requirement could create problems for journals and societies such as SICB.

We sent out a number of emails to science reporters who have attended SICB meetings in the past and who might be candidates for attending the 2010 meeting. We do have a number of science reporters registered to attend, including Science News. Science hoped to send someone to cover the meeting.

The coming year expects to be full with the following efforts planned or discussed by the PAC members:

- Cooperative effort in Louisiana with the Cain Center
- Establish a public lecture at our annual meetings, focusing on drawing in general public
- Conduct media training workshops for SICB members at the annual meeting and ideally in major US cities during the year.

Development Committee Report

Tom Daniel, Chair

Past year: Well shy of goal, but the enthusiasm for small companies in the past economy was sub-optimal. Many private organizations and individuals were shy. Attempted two NW philanthropists without success (yet). Raised \$2 K from Vision Research. It is about 0.1 x what our goal is...

Ideas for future development assembled from Ron Dimock.

- Opening plenary address and Welcome Reception (which immediately follows). The 'plenary' alternates between a past-presidential address and an outside speaker. Past presidents are pretty cheap..., but outside speakers may not be. If we had on hand \$3000 annually to cover this, we might be in good shape. With our 4% rule, that would require an endowment of \$75,000.
- The Welcome Reception, on the other hand, was budgeted at \$15,000 for the Boston meeting. If we coupled these two, we're looking at about \$20,000 per year that would require an endowment of \$500,000. Of course even one-time support in Seattle would help.
- Dorothy M. Skinner Award(s) -this is a new award to provide travel support for "women PhD students and/or post-doctoral fellows to present their research at annual meetings of the SICB." The current fund balance is \$5,730 which would only generate \$229 at the 4% level. Last year we committed \$1000 to the award... Clearly this fund needs to grow.
- Carl Gans Award in Biomechanics. You no doubt already know that this fund is in the works. The new policy on "Named Funds" is that they must have a minimum of \$25,000 in endowment in order to 'exist'. Robert Dudley, Ray Huey and others are working on this as we speak. Additional extramural funding would help get this fund up and running as soon as possible.
- Support for any of our other endowed funds:
- Current 5-yr (or fewer) mean 4% yield
- Symposium Fund \$107,570 \$4300
- G.A. Bartholomew Fund 141,770 5700

Division of Animal Behavior (DAB)

Tom Hahn, Chair

1. Sponsored three symposia at the Boston meeting:
 - A. Co-sponsored (with DCE and DVM) the society-wide symposium “Hormonal regulation of whole-animal performance: Implications for selection. “
 - B. Co-sponsored (with DCE) the symposium “Evolution of mechanisms controlling timing of breeding in animals.”
 - C. Co-sponsored (with DVM) the symposium “Genomics and vertebrate adaptive radiation: A celebration of the first cichlid genome.”

2. Ran best student poster and best student talk competition. Awards made for:
Best talk: A. M. Torregrossa: Specialist and generalist herbivores regulate food intake on diets containing novel plant compounds.
Best poster: Branislav Ijic: Perceptual modeling of egg color mimicry in cuckoo-host coevolutionary arms races.

3. Put proposed bylaws changes (to bring DAB bylaws into agreement with SICB bylaws) to vote of DAB membership and approved these changes.

4. Elected new divisional chair (Marilyn Ramenofsky)

Division of Comparative Endocrinology (DCE)

Stacia Sower, Chair

- 1.** This year we are pleased to announce that Professor Carl B. Schreck, PhD, Leader of the Oregon Cooperative Fish and Wildlife Research Unit, Oregon State University, USA, will be presenting the Howard Bern Lecture. The title of his presentation will be "Haruspication: Why Is The Endocrine System So Similar and Why Is It So Dissimilar Amongst Fishes?"
- 2.** Frederick C. Leung hosted the 16th International Congress of Comparative Endocrinology at the University of Hong Kong, June 22-26, 2009, a very scientifically rich meeting. There were over 300 participants. There were five plenary lectures given by eminent scientists including James W. Truman (Howard Hughes Medical Institute), Douglas M. Stocco (Texas Tech University), Jae Young Seong, Pickford Medalist Lecture (Korea University College of Medicine), Dan Larhammar, Bargman-Scharrer Lecture (Uppsala University), and Kazuyoshi Tsutsui (Waseda University). There were 16 State-Of-The-Art Lectures and 13 symposia covering various topics in comparative endocrinology.
- 3.** Approximately 45 students are participating in the Best Student Paper program in Seattle (total for both oral and poster presentations). Dr. Ignacio Moore of Virginia Tech will serve as the Chair of the DCE Student Award Committee.
- 4.** We invited the Western Regional Conference on Comparative Endocrinology (WRCCE) to have a co-meeting with DCE at the SICB meeting in Seattle. WRCCE accepted and we are looking forward to a strong endocrine group in 2010 at SICB.
- 5.** Our division has made a significant contribution to the continuing series of Grand Challenges in Organismal Biology that is available in the SICB journal, *Integrative & Comparative Biology*. The title of the DCE contribution is "Comparative endocrinology in the 21st century" - by Robert J. Denver, Penny M. Hopkins, Stephen D. McCormick, Catherine R. Propper, Lynn Riddiford, Stacia A. Sower, and John C. Wingfield, published August 7, 2009 *Integr. Comp. Biol.* 2009 49: 339-348.
- 6.** Linda Holland and Stacia Sower are co-hosting a late-breaking symposium entitled "Insights of Early Chordate Genomics: Endocrinology and Development in Amphioxus, Tunicates and Lampreys." This symposium is supported by the National Science Foundation.
- 7.** Members of DCE and others (Canadian comparative endocrinologists) have continued discussions on forming a new society called North American Society of Comparative Endocrinology. Professors Robert Denver (rdenver@umich.edu) and Vance Trudeau (trudeauv@uottawa.ca) are leading this effort.
- 8.** The Endocrine Society meeting will be held June 19-22, 2010 in San Diego, California.
- 9.** 43rd Annual Meeting of the Society for the Study of Reproduction will be held July 30 to August 3, 2010 in Milwaukee, Wisconsin.
- 10.** The 14th International Congress of Endocrinology (ICE2010) will be held in Kyoto, Japan from March 26 (Fri) to 30 (Tue) in 2010.

Division of Comparative Biochemistry and Physiology (DCPB)

Joe Williams, Chair

A new DCPB chair for 2010-2011: I want to remind everyone that Jim Hicks will be Chair of DCPB for the coming term. I hope Jim has as much fun meeting new people as I have had!

Jim Hicks resigns as editor of PBZ: Jim Hicks and Andrea Canfield served as editor and managing editor, respectively, of PBZ from 2001-2009. During that time, they processed 1,536 manuscripts. As editor, Jim made substantial changes to the editorial process of PBZ, including; double-blind reviews, electronic manuscript submission and reviews, "Ecological and Evolutionary Approaches" subtitle, color covers, and 'Focused Issues' on topics such as climate change and extinction, and experimental evolution. He accomplished all of this while running an active lab and carrying a full teaching load. Where did he find time to be a consultant to Pixar Animation Studios on "Wall-E"? Amazing! Jim, we thank you!

When we began a search for a new editor, all associate editors, without exception, requested that Andrea Canfield remain on board as managing editor. Therefore, the new incoming editors made re-hiring Andrea their top priority, clear indication of the high esteem that we all hold for Andrea. All of DCPB extends a warm thank you to Andrea for her efforts on our behalf.

New Editors of *Physiological and Biochemical Zoology*: I am pleased to announce that Katie Gilmour of the University of Ottawa and Trish Schulte of the University of British Columbia have agreed to serve as Co-editors of *Physiological and Biochemical Zoology*. Katie and Trish served as associate editors of PBZ for several years before assuming co-editorship in July 2009. I am also happy to announce that Andrea Canfield (pbz@uci.edu) will continue as managing editor, assuring a smooth segue between old and new editors.

As co-editors of PBZ, Gilmour and Schulte have outlined several goals for *PBZ*. First and foremost, they identified the primary goal of positioning *PBZ* as the top journal for comparative physiology and biochemistry within an evolutionary, ecological, and/or behavioral context. They note; "achieving this goal requires raising the profile of the journal within its current author base, as well as making PBZ a more attractive destination for new researchers' best work". A key step to increase the attractiveness of *PBZ* will be to reduce the turnaround time from manuscript submission to publication. Significant steps have already been taken in this regard, and new initiatives will be implemented during the coming months. In order to alleviate the backlog of papers that the journal has accumulated, the University of Chicago Press has agreed for at least the remainder of the year to a temporary increase in the size of each issue regardless of the increase in publication costs. Efforts are also being made to streamline the production process so that electronic publication follows rapidly upon acceptance of a manuscript with subsequent appearance in print according to *PBZ*'s schedule of 6 journal issues per year. In addition, the new editors aim to reduce the time required for manuscript review and have instituted a system of gentle reminders to reviewers. As active researchers themselves, Gilmour and Schulte are acutely aware of the need for timely publication of research results and have made achieving this goal for *PBZ* a top priority. The new editors are also pleased to announce that all back issues of *PBZ* are now available electronically in JSTOR via the *PBZ* Web site.

The George A. Bartholomew Award Winner! The George A. Bartholomew Award Committee has selected Dr. Roberto Nespolo, Associate Professor of Science, Universidad Austral de Chile, as the recipient of the 2010 George A. Bartholomew Award. An annual award administered by DCPB, the 'Bart Award' is "given to a young investigator for distinguished contributions to comparative physiology and biochemistry or to related fields of functional and integrative biology". Roberto's research has focused on studying how animals in natural populations acquire and allocate energy, and the heritability of these energy acquisition/allocation patterns. He has also been interested in exploring what constraints to adaptive evolution exist in animals, and ultimately how they impact fitness. Roberto says, "Our group works in three main areas, evolutionary quantitative genetics of energy metabolism in natural populations of animals, comparative physiological studies addressing specific adaptations to the environment, and the physiological causes and consequences of human-driven habitat perturbations and invasions." One of his recent papers supports a connection between energy expenditure and fitness. Congratulations Roberto! We look forward to your presentation in January. Prior to Roberto's talk, John Lighton, founder of Sable Systems, will present Roberto with a cash prize of \$1,000 in honor of Dr. Bartholomew who was John's Ph.D. advisor at UCLA. Once again, we are extremely grateful to John and Sable Systems for this very generous gift.

George A. Bartholomew Award Committee: On behalf of DCPB, I thank Stephen Secor, chair of the George Bartholomew Award Committee, and the other committee members, Peter Wainwright, Malcolm Gordon, Lou Burnett, and Doug Altshuler for taking the time to evaluate the large number of applicants for this year's award. We extend a warm welcome to Doug Altshuler, the newest member of the committee. Thanks to all.

Symposia Sponsored by DCPB: For the 2010 meeting, DCPB will sponsor a symposium entitled "Metabolism, Life History, and Aging". Jim Harper, organizer of the symposium, wrote "Laboratory models have demonstrated a clear link between metabolism and aging, and it is well known that the evolution of specific life histories can be driven by metabolic factors. However, there is little known regarding how the adoption of specific life history strategies can shape aging and life span in populations facing different energetic demands, as for example animals in tropical vs. temperate environments, from either a theoretical or a mechanistic viewpoint. This symposium would bring together biogerontologists who work on a variety of vertebrate and invertebrate models whose interests transcend these boundaries. The hope is that this symposium will forge new relationships between the biogerontology community and comparative field biologists to generate new experimental paradigms with important ramifications for human medicine."

DCPB will also co-sponsor a symposium entitled "Advances in Antarctic Marine Biology" organized by James McClintock, Charles Amsler, Amy Moran, Art Woods, and Bill Baker. These authors wrote "The unique marine environment of Antarctica provides an exciting opportunity to showcase a broadly based symposium on aspects of the biology of its rich and diverse marine life." Topical areas will include, among others, the recent dramatic ecological impacts of climate changes across multiple trophic levels in Antarctic seas, advances in molecular and physiological aspects of cold adaptation in marine invertebrates and fish, the role of chemical ecology in structuring nearshore marine benthic communities of the Antarctic Peninsula, new molecular approaches to deciphering patterns of marine invertebrate

biogeography and phylogenetics, and recently engineered instrumentation used to elucidate foraging habitats of antarctic marine mammals. The presentations will be of pertinence to biologists (graduate students and research faculty) working in temperate and tropical environments, as well as polar environments.

Division of Evolutionary Developmental Biology (DEDB)

Linda Z. Holland, Chair

The year started with the meeting in Boston in January, 2009.

As those of you who attended the Boston meeting know, the weather was the best Boston can offer in January. The symposium sponsored by DEDB, "Cell-Cell Signaling Drives the Evolution of Complex Traits," organized by John Torday, was very well attended. Winners of the best student poster and best student talk were : Eric Lee, Oklahoma University for his poster "Cartilage rescue in a zebrafish mutant following heterospecific expression of a lamprey SoxE gene." Best oral presentation: F. Tulenko, Wesleyan University for his talk "Body wall formation in lamprey." Thanks to the generosity of Wiley-Blackwell, each award included \$150 plus a one-year's subscription to the Journal of Experimental Zoology, part B.

The DEDB business meeting was well attended. We welcomed Elaine Seaver as DEDB secretary, Pat Hernandez as Program officer elect and Mark Martindale as chair elect. Pat and Mark will take over from Wendy Olson and me, respectively, after the 2010 meeting.

Topics for discussion included the "Grand Challenges," which the executive committee has formulated at the behest of Bill Zamer from NSF. The idea is to formulate an umbrella under which all of the SICB membership can fit in order to emphasize organismic biology at the NSF. There is a Grand Challenges Workshop to be held during the Seattle meeting. As I see it, all this is in response to NSF's push for cross-disciplinary science (integrative and comparative, i.e. systems biology), the idea being that more insights can be gained from cross-disciplinary studies than can come from narrowly focused ones.

Jim Deshler an interim program officer for Mechanisms of Development/Evolution of Developmental Mechanisms at NSF addressed the DEDB business meeting. He told us that about 13 or 14 of 80 proposals (17%) were funded in the fall. I believe that 10 years ago there were typically 110-120 proposals per review period. I've not seen the statistics, but it raises concerns that people have become discouraged. Thanks to the stimulus package, NSF funding levels for developmental biology rose to 30% in 2009, but are expected to fall back to 17% in 2010.

Dave McCauley and Jessica Bolker ably served as a nominating committee for the position of secretary to elect a new secretary to take over from Elaine Seaver after the 2011 meeting. Mike Shapiro (U. of Utah) was elected in the spring.

I have appointed a nominating committee consisting of Karen Sears, Brad Davidson and Bill Jackman to select candidates for Mark Martindale's successor as chair to take over after the 2012 meeting. The election will be held in the spring.

At the Seattle meeting DEDB is sponsoring three symposia (1) chaired by Stacia Sower (DCE) and myself is entitled "Early Chordate Genomics: Endocrinology and Development in Amphioxus, Tunicates and Lamprey." (2) chaired by Alex Beley entitled "Animal

regeneration—integrating development, ecology and evolution,” and (3) chaired by Dave Lambert entitled “Spiralian Development-conservation and Innovation.” There are several additional symposia of interest to DEDB, including one on the cnidarian tree of life project, the evolution of fish body plans, and one honoring the work of Richard Strathmann. DEDB has 18 students signed up for the best poster/best talk competition, which is more than double the 2009 level. This bodes very well for evo-devo as a discipline. However, it raises the specter of a very uncertain future for students and postdocs—too many people vying for too few jobs and too little grant money.

Division of Systematics and Evolutionary Biology (DSEB)

Anne Maglia, Chair

At the Boston meeting, DSEB co-sponsored two symposia: the Biology of Parasitic Crustacea and Insect Evolution. The division welcomed a new program officer, Mike Alfaro, who, along with Sam Price and Marguerite Butler, put on a two-part Phylogenetics for Dummies workshop introducing the programming language R and its use in systematics. The workshop received NESCent funding and was attended by more than 85 participants. The best student paper competition included 17 outstanding talks, with Liam Revell of Harvard University winning the prize for his talk entitled “The Measurement and Interpretation of Phylogenetic Signal.” Honorable mention went to Nicole Cox of Clemson University for her talk “Trans-Pacific phylogeography: geographic isolation and speciation in *Nucella lima*.” The best student poster award was given to Molly Schumer of Reed College for her talk “hCGH Detects Genomic Architecture Among African Cichlids Species of the Genus *Julidochromis*.” Rich Mooi was re-appointed to *ICB* Editorial Board as our divisional representative, and we appreciate his willingness to serve in this capacity.

During spring voting, the division approved changes to the divisional bylaws that made them more consistent with the by-laws of the society at large. Most of the changes were minor, but one major change is all divisional officers will now serve a three-year term. We had no divisional elections this year.

At the Seattle meeting, the division will once again sponsor a Phylogenetics for Dummies workshop. Mike Alfaro and Luke Harmon will pick up from last year’s successful workshop and of focus on using R to conduct comparative analyses. In addition, DSEB is sponsoring two symposia: the Cnidarian Tree of Life and the Contributions of Richard Strathmann.

Division of Vertebrate Morphology (DVM)

Mark Westneat, Chair

DVM had an excellent and productive year 2009 with two regional meetings, lots of activities at the Boston meeting, and central participation in the NSF Grand Challenges in Organismal Biology initiative. The 2009 SICB meeting in Boston was excellent and well attended by DVM. We sponsored or co-sponsored four symposia in Boston: (i) *Hormonal Regulation of Whole-Animal Performance: Implications for Selection*; (ii) *Sensory Biomechanics*; (iii) *Biomaterials: Properties, Variation and Evolution*; and (iv) *Genomics and Vertebrate Adaptive Radiation: A Celebration of the First Cichlid Genome*. The D. Dwight Davis Award for Best Student Paper in the Division of Vertebrate Morphology was awarded to Natalia Taft from the University of Massachusetts Amherst for her work entitled *A New Twist on Bending: Properties of the Pectoral Fin Rays of the Benthic Longhorn Sculpin*. The Best Student Poster Award in the Division of Vertebrate Morphology was awarded to Laura Macesic of Florida Atlantic University for her research on Flexural stiffness and composition of the propterygia of punting and non-punting batoids.

Two highly successful regional meetings were held in 2009- a southeast regional meeting at University of North Carolina and a northeast regional meeting at Brown University.

Under the leadership of Secretary Gary Gillis, current DVM officers and others prepared research summaries for posting on the DVM website. These are intended to inspire other members to follow suit with their own research summaries. Our goal is nearly complete coverage of active morphology labs as a resource to students and researchers.

DVM was active in the development of the NSF Grand Challenges initiative, with Kurt Schwenk and Mark Westneat joining several conference calls in the Spring, and Kurt taking the lead on the first and widely read grand challenges paper for Integrative and Comparative Biology.

At the close of the Boston meetings, DVM Chair Kurt Schwenk handed over the helm to Mark Westneat to be divisional chair for 2 years. Many thanks to Kurt for his excellent service to DVM and SICB. The DVM spring election resulted in Kiisa Nishikawa being elected to be the next chair of DVM. Kiisa will be Chair-elect for 2010, Gary Gillis (our intrepid Secretary) and Jeff Walker (our fearless Program Officer) step down at the close of the Seattle meeting, to be replaced by the equally brave and inimitable Lara Ferry-Graham and Rick Blob as our new officers. Thanks to all of these individuals for their service to the Division and Society.

Karel Liem passed away on September 3, 2009. Karel was one of our most charismatic leaders, a former President of the Society, and influenced the careers of many of us. He was also hilarious, and a fan of practical jokes, so I anticipate that at the upcoming Seattle meeting we will have the opportunity to discuss Karel's legacy, recall some of his antics, and make plans to recognize his intellectual impact on our science in more depth. Karel Liem, Henry Bryant Bigelow Professor of Ichthyology, Curator of Ichthyology in the Museum of Comparative Zoology, and Honorary Associate and Former Master of Dunster House, Harvard University. 1936-2009.

Report from the
Integrative and Comparative Biology Review Team

Presented to the Executive Committee
Society for Integrative and Comparative Biology
at the
SICB Annual Meeting
Seattle, Washington
January 7, 2010

Committee Members: Chuck Booth , Chair
 Sally Woodin
 Linda Walters
 Rick Blob
 John Wingfield

Timeline for the Development of the ICB Review Committee's Report

- August 2008 – Committee appointed by SICB President, John Pearce
- October 2008 – Committee receives formal charge from SICB Executive Committee
- January 2009 – Committee meets twice at SICB annual meeting in Boston
- Discusses committee charge with John Pearce
 - Interviews Brett Burk (Burk, Inc.) and Cathy Kennedy (ICB Publication Editor for Oxford University Press)
 - Reviews 2008 ICB Annual Reports from ICB Editor-in-Chief and OUP
- Spring-Summer 2009 – Email discussions of information obtained from ICB Editor-in-Chief, ICB Editorial Board Members, SICB Executive Committee member, ICB editorial conference phone calls, etc;
- Questions submitted for SICB membership online survey
 - Initial development of Committee Report
- October 2009 – Committee receives draft of original ICB-OUP Publishing Contract
- November 2009 – Committee receives results from SICB online survey
- December 2009 – Continued development of Committee report
- Committee receives 2010 ICB Annual Reports from ICB Editor-in-Chief and OUP
- January 2010 – SICB annual meeting: Informal discussions (by Booth) with ICB-Editor-in-Chief, Ian Sherman (current ICB Publication Editor for OUP), and members of SICB Executive Committee
- Committee meets to review draft of Committee Report
- January 7, 2009 – Final Committee Report presented to ICB Executive Committee

**Report of the
Integrative and Comparative Biology Journal Review Committee**

(SICB Executive Committee Charges to the Committee are in **bold** type)

1. Evaluate how the editorial office and production staff work together to produce the journal in an efficient and timely manner.

The ICB staff (Dr. Harold Heatwole, Editor-in-Chief and Nancy Cochran, Assistant Editor) have a close and productive working relationship with the Oxford University Press (OUP) journal production staff (Publishing Editor, in Oxford, UK and Production Editor in the US). After papers have been submitted, reviewed, edited, and accepted, they are sent to the OUP Production Editor with notes about any special procedures. The ICB staff maintain routine, day-to-day communications with OUP production staff about any issues that arise regarding the papers, publication schedules, *etc.* Additionally, while the journal is in production, monthly conference phone calls involving the ICB staff, OUP staff, several members of the SICB Executive Committee, plus an Editorial Board member (Booth) allow the free exchange of information and discussion related to the status of papers from each symposium, ICB production schedules, editorial policies, *etc.* The Assistant Editor records and distributes minutes from the conference calls to all participants within a few days after each call.

When *American Zoologist* (and, for a short time, ICB) was published by Allen Press, some symposia papers were not published until almost two years after the annual meeting at which they were presented. With advent of electronic submission and processing of manuscripts, plus a recently revised publication schedule – since 2007, ICB has been published monthly from July through December- symposia papers are routinely published in the printed journal in the same calendar year as the SICB meeting in which the symposia were held. Articles are published online approximately six weeks after acceptance. According to Dr. Heatwole, the most common bottlenecks in the manuscript processing schedule are the time it takes reviewers to submit their reviews and, especially, authors to revise and resubmit their manuscripts. In addition, publication schedules for individual symposia may have to be revised because some authors do not submit their original manuscript by the January 31 deadline. However, these delays in

forwarding edited manuscripts to OUP have not prevented the OUP production staff from meeting established publication schedules for each issue of the journal.

In addition to publishing symposium papers (= 65% of pagination in 2009), ICB publishes book reviews (=26% of pagination in 2009), and occasional Editorials (=2% of pagination). In 2009, ICB also began publishing a series of papers highlighting Grand Challenges in organismal biology in response to an NSF initiative (= 6% of pagination).

Books to be reviewed are selected by Dr. Heatwole from among the titles submitted to the ICB office by publishers (or, in some cases, authors). Dr. Heatwole and Nancy Cochran compile a list of potential reviewers and then start contacting individuals until someone agrees to write the review. Dr. Heatwole edits the review as necessary, and gives the author a chance to respond to the proposed changes. The number of book reviews published in each issue of ICB varies with the number of reviews in hand and the number of available pages in the journal.

The topics and authors for the Grand Challenge papers are selected by Drs. John Pearse and Rich Satterlie in consultation with the SICB Executive Committee and other SICB members. Drs. Pearse and Satterlie, along with Dr. Dianne Padilla (Editorial Board member), have been working together and functioning as an Editorial Board Associate to oversee the submission and review of the Grand Challenge manuscripts.

Conclusions: The journal is being produced in a very efficient and timely manner.

The concern about symposium authors not meeting submission deadlines is discussed below (#3 and #7). The Review Committee was initially concerned that the Grand Challenge papers would pose an excessive burden for the Editorial Staff, and raised the possibility of an Associate Editor being appointed to handle the workload. However, Dr. Heatwole feels that the present system is working efficiently, and that the addition of an Associate Editor is not necessary at this time.

Recommendations: If it is eventually decided that additional types of invited reviews or perspectives are to be published, the need for an assistant or associate editor, or guest editor, to handle the increased workload should be reconsidered.

2. Evaluate how the editor works with the editorial board to maintain sound editorial policies and selection of material to publish; that is, if the editorial board is utilized effectively?

Upon assuming the position of Editor-in-Chief, Dr. Heatwole initiated several changes to the Editorial Board's composition and role in overseeing the journal:

First, he initiated an Editorial Board luncheon at the SICB annual meeting, which allows the Board members to get to know each other, receive annual reports from the Editorial Office and OUP, and discuss key issues.

Secondly, he asked a member of the Editorial Board (Booth) to take part in the monthly journal production conference phone calls, to assure that the Board has some input into the discussions; this also allows at least one member of the Board to stay informed about key issues related to publishing the journal that are usually outside the scope of a journal editorial board.

Thirdly, to improve the international perspective of the journal, Dr. Heatwole added five international Associates to the Editorial Board (after receiving the enthusiastic support of the Editorial Board and the Executive Committee to pursue this); the Associates, all of whom are eminent scientists, are selected by Dr. Heatwole from candidates nominated by the Editorial Board. The international reputation of the Society is further enhanced because some international Associates have been motivated to attend the SICB annual meeting. Although three of the five current Associates are in Europe, with one in Australia and one in South America, Dr. Heatwole has actively sought nominees from Asia and Africa; unfortunately, when an Associate position becomes available, some nominees do not respond to inquiries about their interest in serving, and other nominees duplicate areas of expertise already represented by continuing Associates. However, Dr. Heatwole has made it clear that he would like to see broader geographical representation by the Associates.

Dr. Heatwole frequently seeks input from the Editorial Board on editorial policies, such as whether or not to publish unsolicited manuscripts or commentary about a recently published paper in ICB; whether or not to publish symposium papers presented at a conference other than the SICB annual meeting; to review manuscripts for which the peer reviewers have conflicting recommendations; *etc.*

The Review Committee asked members of the Editorial Board to comment on this charge via email and the responses were very favorable: Board members feel actively involved with the editorial policies and decisions; those having editorial board experience with other journals feel they are much more actively involved with ICB; the Editorial Board luncheons at the annual meeting are extremely informative, and offer a good opportunity to discuss important editorial issues in person.

Conclusions: All indications are that the Editorial Board is being used effectively. The Review Committee feels that the Editorial Board might play a more visible role in suggesting potential symposium topics for upcoming SICB annual meetings.

Recommendations: Editorial Board members should be proactive in suggesting symposium topics.

3. Evaluate how the editor works with the society program officer and symposium organizers to assure smooth handling of the symposium manuscripts (including submittal deadlines, pages limits, figure preparation and charges.)

Dr. Heatwole communicates via email directly with the SICB Program Officer about specific issues related to the publication of symposia papers from the upcoming annual

meeting, and the Program Officer is on the email distribution list for routine discussions about editorial issues. The Program Officer is invited to participate in the monthly journal production conference calls, and receives the minutes of each call.

The ICB Office sends each symposium organizer an email message that clearly explains the requirements for submitting papers to ICB (*e.g.*, submission deadline, page limits, charges for color graphics, open access policy, *etc*) and requests that this information be conveyed to symposium contributors as soon as possible. The same information is sent directly to each contributor. Submission information is also published annually in the journal and on the ICB website, and it is reviewed at the symposium organizers' luncheon at the SICB meeting, and authors receive it when they upload their manuscript at ScholarOne Manuscripts. Thus, the occasional complaint from symposium organizers and contributors that publication information was not clear (*e.g.*, One symposium organizer made this comment in the SICB online survey) cannot be attributed to any failings of the ICB office.

The SICB online survey asked symposium organizers and contributors to rate their satisfaction with various aspects of the publication process:

- a. Speed of Publication: One hundred percent of responding symposium organizers (N = 28) and 98.7 % of responding symposium contributors (N = 75) were satisfied or very satisfied with the speed of publication;
- b. Interaction with ICB Editorial Staff: Ninety-three percent of responding symposium organizers (N= 28) were satisfied or very satisfied with their interaction with the ICB editorial staff. Symposium contributors were not asked about their interaction with the ICB editorial staff.
- c. Editorial Quality of Published Papers: One hundred percent of responding symposium organizers (N = 28) and 97.3 % of responding symposium contributors (N = 75) were satisfied or very satisfied with the editorial quality of the papers as they appeared in print (formatting; free of typographical errors; quality of figures or images, *etc*).
- d. Cost of Printing Color Graphics: Of 54 symposium contributors who responded to the question about satisfaction with the cost of printing color graphics, 44 (81%) were satisfied or very satisfied, while 10 were not very satisfied or dissatisfied (this excludes the 28 responses of Not Applicable). No written comments were offered to explain the lack of satisfaction but there are two likely causes: 1. In accordance with the new (2009) policy on publishing color graphics, the Editor-in-Chief may have determined that color was not essential to the print version of the paper, therefore the author had to pay for color graphics; 2. those who had to pay for color graphics felt the cost was excessive.
- e. Peer Review Process: Satisfaction with the peer review process is addressed below (#4).

Conclusions: The Editorial Staff appears to work very effectively with the SICB Program Officer and symposium organizers to assure that symposium contributors are informed about 1) the expectation that they will submit a paper to ICB; 2) the deadline for submitting manuscripts; 3) the guidelines and procedures for submitting a manuscript. Nevertheless, some authors choose not to publish and others do not submit a manuscript, or revised manuscript, by the stated deadline, which can disrupt publication schedules. The Review Committee discussed the benefits of having the SICB Program Office assume a greater role in monitoring the status of papers not yet submitted to ICB, but concluded that this would be too much of a burden on the Program Officer. Instead, the Committee concluded that, once a symposium has been presented at the annual meeting, the responsibility for communicating with authors and meeting publication deadlines lies with the ICB staff and the Editorial Board.

Recommendations: None

4. Evaluate how well the manuscripts are reviewed, and how the editor works with reviewers.

According to Dr. Heatwole, the process for reviewing and editing manuscripts as follows:

The electronic submission and review process takes place as prescribed by Scholarone Manuscripts (formerly called Manuscript Central) and is similar to that used by most other journals. Once the digital manuscript is received by the Editorial Office, invitations to potential peer reviewers are sent out within approximately three days. Each paper is reviewed by two external reviewers; one reviewer is typically chosen from a list recommended by the author, while the other is selected by Dr. Heatwole based either on his familiarity with the field of research, or identification of researchers from the Literature Cited section of the paper, or consultation with a member of the Editorial Board. Dr. Heatwole noted that reviewers recommended by the author often give harsher reviews than reviewers he selects. If an author asks that a specific individual not be asked to review his/her paper, that request is honored.

Reviewers are asked to submit their reviews within two weeks, although extensions may be granted; in fact, the average reviewer turn-around time is 19 days. If a review is not submitted by the deadline, Scholarone Manuscripts sends an automated reminder; if necessary, the ICB staff will send an email reminder and follow that up with a phone call. If a review appears to be inadequate or unfair, a third reviewer (possibly a member of the Editorial Board) will be used. If a manuscript is deemed acceptable for publication, it is edited line-by-line by Dr. Heatwole to assure that the language and science meet his high standards; the edited manuscript and reviewers' reports are then returned to the author for revision. If a reviewer wants to see a revised manuscript, that request is honored.

According to Dr. Heatwole, there are two bottlenecks in this process, both of which are common to academic journals: The time it takes reviewers to formulate their reviews

(especially if they want to see the revised manuscript) and the time it takes authors to revise and resubmit their manuscript. If necessary, Dr. Heatwole will ask a symposium organizer to contact a contributor about the status of his/her manuscript submission or revision. The average time from submission to final decision on a revised paper is 70 days.

In the recent SICB online survey, symposium organizers and contributors were asked to rate their satisfaction with the quality of peer review of the symposium papers: 96% of symposium organizers (N = 28) and 97% of contributors (N = 75) were satisfied or very satisfied with the quality of peer review. As the goal of peer review is to assure that only high quality science is published, the steadily rising ICB journal impact factor (refer to # 7, below) suggests that the current peer review process is very successful.

Finally, it should be noted that Dr. Heatwole recently received an unsolicited critical review of a published symposium article for possible inclusion in a future issue of the journal. There was unanimous agreement among Dr. Heatwole and the Editorial Board that this particular commentary was not appropriate for publication in its original form. However, there was also a consensus that serious consideration should be given to future publication of commentaries on ICB articles (with stringent guidelines); this topic was discussed further at the Editorial Board meeting in Seattle and it was agreed to proceed with this.

Conclusions: The review process for submitted papers appears to be operating effectively, with the result being the publication of high quality articles. The Review Committee supports the decision of the Editorial Board to publish critical commentaries on published papers with appropriate guidelines to assure that the feedback, and reply by the original author(s), is constructive and not defamatory.

Recommendation: A process should be developed to allow publication in the journal of occasional, appropriate critical commentary on ICB articles, along with a concurrent reply by the original author(s).

5. Evaluate how well the production staff produces the publications, both on-line and in print.

As noted above, the ICB Editorial Office works closely with the OUP production staff. The production quality of the print version of ICB is excellent and is arguably unsurpassed by any academic journal. In 2009 only one erratum was required, a correction of an author error. The journal website is well laid out and easy to navigate. Online articles are available for downloading in full-text HTML and PDF formats, and graphics can be downloaded in graphic format or as PowerPoint slides. HTML and PDF versions of ICB articles are each typically accessed 2,000-3,000 times a month. The average time from receipt by Oxford Journals to publication online has steadily decreased, from 7.9 weeks in 2007 to 4.9 weeks in 2009; the goal of OUP is to reduce this time to 4 weeks. Online articles are initially published as stand-alone articles via

Advance Access; they are later compiled into issues corresponding to the print version of the journal. The time from receipt to publication in the print journal is typically several months, as all articles from a symposium are scheduled for publication in a specific ICB issue; however, all symposium articles from the 2009 SICB annual meeting were published in print in 2009. Five of the six print issues in 2009 were published on or ahead of schedule; the exception was issue 49(5), which was published one week late due to a one-day delay sending the issue details to the printer.

Oxford Journals conducts an online user-satisfaction survey of submitting authors. In 2009, ICB authors had a 24% response rate to the survey and registered a high level of satisfaction with respect to speed of publication upon acceptance, the quality of the end product, and the overall service provided by Oxford Journals; 95% of ICB respondents rated their overall experience publishing with Oxford Journals equal to or better than their experience with other journals. This high degree of satisfaction is consistent with the results of the SICB online survey of ICB symposium organizers and contributors.

Conclusions: All available evidence points to OUP doing an outstanding job in producing a high quality journal in print and online formats and in accordance with established publication schedules. The stated goal of the OUP production staff in 2010 is to a) improve symposium article copy flow in order to meet the goal of publishing articles online within 4 weeks of receipt; b) work to achieve the page budget (*i.e.*, page allotment), and c) maintain the journal's 'Top 10' status among zoology journals based on the Impact Factor.

Recommendations: None

6. Evaluate how Oxford University Press promotes the journal to maximize exposure and income.

As described in its annual ICB report to the society, OUP has an aggressive marketing plan for its journals with the goals of a) maintaining and increasing subscription revenues and distribution; b) increasing the number of high quality submissions; and c) increasing journal usage and dissemination. Marketing strategies include:

- the OUP website, with downloading of a free sample copy of ICB, banner advertisements, library recommendation form, pay per view, *etc.*
- Electronic Table of Contents Alerts (eTOCs, with nearly 4,000 current registrants) and Advance Access alerts (with nearly 600 current registrants)
- Printed advertisements in OUP journals Biology catalogue
- Sample copies of ICB and promotional materials at various biology conferences in North America and Europe

As a public service, not-for-profit institutions in 45 developing countries can apply for free online access to OUP journals through OUP or through several international initiatives (*e.g.*, WHO). Also, discounted subscription rates are available to 31 middle-income countries.

Although individual institutional subscriptions to ICB have declined over the past few years (from 482 to 328 between the years 2005 and 2009), due largely to worldwide economic conditions, this has been more than offset by increased institutional access to ICB via library consortia (from 1006 in 2005 to 2331 in 2009), with increases occurring in all marketing geographic regions (UK, Europe, North America, Japan, and the Rest of the World). Corporate subscriptions via consortia appear to be down in 2009, but this reflects, at least in part, a change in how corporate subscriptions are counted.

Conclusions: SICB and ICB clearly benefit from the reputation of Oxford University Press and the infrastructure and marketing expertise of its journals division. Despite the precarious economic climate, the subscription base, and therefore the revenue stream, remain strong.

Recommendations: None

7. Evaluate how ICB is viewed by our members and colleagues (including with respect to impact factor and PubMed.)

ICB is the flagship journal of the Society for Integrative and Comparative Biology, and all members receive a subscription (both print and online) paid for out of their annual membership dues. To gauge how the journal is used, or valued, by the SICB membership, the SICB online survey included a series of questions about the importance of the journal to research, undergraduate and graduate teaching, and, for students, the importance of the journal in their coursework. The responses are summarized as follows:

- a. Among 727 respondents who conduct research and/or publish scholarly papers, 71 % (514) indicated that ICB is important or very important to their work.
- b. Among 585 respondents who teach or assist in undergraduate courses, only 43% (251) indicated that ICB is important to their teaching.
- c. Among 354 respondents who teach graduate courses, 58.5% (207) indicated that ICB is important for their teaching.
- d. Among 278 respondents who are students, 60% (167) indicated that ICB is important to their coursework.

The importance of ICB to researchers was expected given that the journal publishes primarily research-oriented articles. The fact that more respondents didn't rate the journal as important or very important to their research likely reflects the fact the published symposia articles span a wide range of topics in biology, whereas most research is rather

narrowly focused; thus, there may be only a small number of symposia, and an even smaller number of symposium papers, published annually that are of particular interest to a researcher. The low percentage of undergraduate teachers ranking the journal as important to their teaching is somewhat surprising, given that ICB papers present rather concise reviews of a wide diversity of topics, with up-to-date information not likely to be found in textbooks; it is possible that the question was interpreted differently from the way it was intended (*i.e.*, the journal can serve as a valuable resource for instructors preparing up-to-date lectures, as well as providing articles for students to read).

Several survey respondents expressed dissatisfaction with the format of ICB, *i.e.*, the reliance on symposium papers instead of publishing original research articles. This subject has been discussed extensively by the Editorial Board, most recently at the 2010 Editorial Board meeting. The consensus of the Editorial Board is that symposia articles, plus occasional non-symposium reviews (including, but not limited to, the Grand Challenge papers) make the journal unique among comparative biology journals, and should be continued as the focus of the journal. The Editorial Board is receptive to different types of review or perspective articles being solicited for the journal, whether to fill in gaps in the range of topics covered in SICB symposia, or to highlight key areas of research not addressed by symposia; such articles should increase the appeal of the journal to subscribers and potential subscribers. The Review Committee concurs.

One concern about ICB that was addressed in the online survey, and discussed by the Editorial Board, is the number of symposium contributors who do not submit papers for publication in ICB. At the 2008 SICB annual meeting in San Antonio, 120 symposium talks resulted in 65 papers published in ICB in 2008 (= 54% yield). At the 2009 SICB annual meeting in Boston there were 111 symposium talks presented, but these generated only 55 papers published in ICB in 2009 (= ~ 50% yield). Moreover, according to OUP, each issue in 2009 was under the page allotment (approximately 144 pages per issue, excluding 4 pages each allocated to SICB and OUP for its own materials), and the journal was 180 pages under the annual allotment of 864 pages. Thus, the journal is not publishing as much scientific content as it might, and subscribers are short-changed by not receiving a more comprehensive set of papers from some symposia (in some cases, there is only a single, combined paper co-authored by all symposium authors, which necessarily presents a very limited overview of the symposium theme).

Among the reasons given by symposium organizers and contributors for not publishing papers in ICB are the fact that ICB is not indexed in PubMed, ICB is perceived to have a low impact factor, the research presented was better suited for a more specialized journal, or the research presented was part of a larger body of work and the author did not want to break it up and publish only a portion of it in ICB. There appears to be no simple resolution to this problem. On the one hand, it is disingenuous for a symposium contributor to initially agree to submit a paper to ICB, then fail to honor that commitment. On the other hand, the journal does not have the space to publish every paper from every symposium; ironically, if more symposium authors submitted papers, some symposia would likely be rejected by ICB due to a lack of space, meaning the papers could then be published elsewhere. Assuming a greater yield of submitted papers

from SICB symposia is a desirable goal (and the Review Committee feels it is, if only to provide a more complete set of papers from the symposia that are published), the question of how to accomplish this requires further discussion.

The issues of the journal's lack of PubMed listing and the perceived low impact factor are discussed below:

PubMed

American Zoologist was indexed in PubMed, but this listing was lost when the journal's title was changed to Integrative and Comparative Biology. While it can be argued that PubMed listing is of little relevance given the numerous online search engines and databases, it is clearly important to a large segment of SICB members: According to the SICB online survey, 37% (292) of 783 respondents indicated that the lack of PubMed listing would be important or very important in their decision to participate in a SICB symposium and publish a paper in ICB. This is interpreted as meaning the respondents would have reservations about publishing in ICB.

Former OUP Production Editor, Cathy Kennedy, submitted two carefully prepared applications to PubMed on behalf of ICB; in 2004, the overall rating was 2.5/5, and this improved to 3.3/5 in 2008. The stated reasons for rejection in 2008 were the need for a) more original research, b) more structured abstracts, c) more clear distinction between reviews and research articles, and d) a clear connection to medicine. Whether there were additional, unstated, reasons for the rejection is not clear. The current OUP Production Editor, Ian Sherman, will start preparing another application in the summer of 2010 for submission in 2012. In the mean time, it should be noted that ICB articles are deposited in PubMed Central 12 months after publication.

Journal Impact Factor

The ICB journal impact factor (*i.e.*, Thompson Reuters Impact Factor; http://thomsonreuters.com/products_services/science/free/essays/impact_factor/) has been steadily increasing, from 1.083 in 2003 (an artifact stemming from the journal's name change in 2002) to 2.740 in 2008 (the most recent year for which data are available). The 2008 impact factor gives ICB a rank of 9th out of 125 zoology journals. For comparison, the 2008 impact factors were 2.532 for Physiological and Biochemical Zoology, ~ 2.7 for General and Comparative Endocrinology, 2.981 for Journal of Experimental Biology; 3.364 for Journal of Experimental Zoology (Part B); note that this comparison may be biased in favor of ICB because its articles generally have an extensive review component, and review articles tend to be cited more frequently than original research articles.

While one can question the value of the journal impact factor as a measure of the scientific quality of the journal's contents (*cf.* Wilson, A.E., 2007, *BioScience* 57: 550-551), the

impact factor is taken seriously by publishers and by some university rank and tenure committees. The importance of the impact factor in academic rank and tenure reviews may explain why 52.5% of respondents (N = 783) in the SICB online survey indicated that the ICB impact factor would be somewhat or very important in their decision to participate in a SICB symposium and publish a paper in ICB. Presumably, ICB's rising impact factor was viewed favorably by those who place importance on the factor; unfortunately, that question was not asked. Also, we have no data on the importance of the impact factor to prospective symposium speakers who are not SICB members and, thus, may not be familiar with ICB. Improvement in the impact factor for ICB is best achieved by publishing papers of the highest quality possible.

Several survey respondents suggested that the journal be delivered to members online, instead of a paper copy. The Review Committee feels this suggestion has merit.

Conclusions: Arguably, the scientific content of ICB has never been better than it is presently. However, the journal never has been, and cannot be, all things to all SICB members; constraints on the number of pages that can be published means that difficult editorial decisions sometimes have to be made that will invariably displease some members of the society. Nevertheless, measures can be taken to improve the scientific content of the journal and to make it a more desirable venue for authors to publish their work. These include making every effort to develop symposia that have broad appeal and represent cutting edge science; making every effort to assure that the best papers from a symposium are published in ICB; continuing to pursue PubMed listing as long as it is perceived to be important to SICB members and potential symposium contributors from outside SICB. The Review Committee also feels that an online-only subscription option should be available to members.

Recommendations:

- a) The SICB and Divisional Program Officers and the Editorial Board should continue to seek ways to identify the best possible symposium topics and to recruit symposium organizers who can bring symposium proposals to fruition, with the ultimate goal of getting the best symposium presentations submitted for publication in ICB.
- b) The Executive Committee and Editorial Board should consider ways to make more effective use of the 50 complementary ICB subscriptions afforded the society by the ICB publishing contract (e.g., as perquisite for non-SICB symposium speakers).
- c) SICB should support the efforts of OUP in seeking PubMed listing.
- d) SICB and OUP should work to develop an online-only subscription option.

8. Evaluate the financial health of the journal and its prospects over the intermediate future (e.g., five years.).

Oxford Journals is a division of Oxford University Press. As a department of the University of Oxford, OUP is not subject to corporate merger or acquisition. Oxford Journals recently became one of the first publishers to receive ISO 9001:2008 certification, which is the internationally recognized standard for the quality management of businesses. Thus, OUP represents a stable and efficient business partner for SICB.

Several cost-cutting measures have been implemented recently: The shift to electronic processing of manuscripts several years ago presumably lowered production costs somewhat by reducing the need to ship paper documents, as did the elimination last year of shrink wrapping for journals shipped within the U.S. OUP reported that the new policy regarding publication of color graphics in the print journal resulted in a savings of more than \$25,000 in 2009 (relative to 2008) due reduced waiver of color charges.

There is no assurance that institutional subscriptions will continue to increase at the rate they have in recent years. However, the sale of advertising space on the ICB website has the potential to provide a significant new source of revenue for the journal.

According to the SICB Treasurer, revenues to the society from ICB increased by more than \$43,000 between 2007 and 2009, while the net income increased by more than \$64,000 during the same two-year period. Moreover, the actual net income in 2009 exceeded the budget estimates by almost \$35, 000. Obviously, past performance is not a reliable predictor of future profits. But, ICB's financial situation at the start of 2010 appears to be very solid, and the journal is carefully managed by SICB and OUP.

Conclusions: Despite the unstable economic climate, ICB appears to be on a solid financial footing.

Recommendations: None

9. Evaluate how well Burk Inc. and Oxford University Press work together with respect to managing the financial affairs of ICB, and sharing the costs and profits with SICB.

The Review Committee interviewed SICB Business Manager, Brett Burk, and former OUP Publishing Editor, Cathy Kennedy, while Booth had discussions with current OUP Publishing Editor, Ian Sherman, and members of the SICB Executive Committee and has participated in the journal production conference calls for two years (which involved Burk and the OUP Publication Editor). All indications are that Burk Inc and OUP financial office maintain a very professional, but collegial and productive working relationship. It is the Review Committee's understanding that revenue payments from OUP to SICB are made in accordance with the publishing contract. Additional evidence of a good relationship was the willingness of OUP to provide annual financial statements to Burk Inc. based on the SICB fiscal year (July 1-June 30), which spans two of OUP's

fiscal years (Jan. 1-Dec. 31), and the way that Brett Burk has handled the preliminary stages of publishing contract renegotiations, which protected SICB's interests but also assured OUP of SICB's intent to negotiate in good faith.

Conclusions: Burk Inc. and OUP appear to work together extremely well with respect to managing the financial affairs of ICB and SICB.

Recommendations: None

10. Recommend to the Executive Committee what actions should be taken based on the above evaluations, in time to be considered at the 2010 annual meeting.

The Review Committee's recommendations are as follows:

- If it is eventually decided that additional types of invited reviews or perspectives are to be published, the need for an assistant or associate editor, or guest editor, to handle the increased workload should be reconsidered.
- Editorial Board members should be proactive in suggesting symposium topics.
- A process should be developed to allow publication in the journal of occasional, appropriate critical commentary on ICB articles, along with a concurrent reply by the original author(s).
- The SICB and Divisional Program Officers and the Editorial Board should continue to seek ways to identify the best possible symposium topics and to recruit symposium organizers who can bring symposium proposals to fruition, with the ultimate goal of getting the best symposium presentations submitted for publication in ICB.
- The Executive Committee and Editorial Board should consider ways to make more effective use of the 50 complementary ICB subscriptions afforded the society by the ICB publishing contract (*e.g.*, as perquisite for non-SICB symposium speakers).
- SICB should support the efforts of OUP in seeking PubMed listing.
- SICB and OUP should work to develop an online-only subscription option.

Appendix 1. SICB online survey results for questions pertaining to Integrative and Comparative Biology.

1. If you actively <u>conduct research and/or publish scholarly papers</u> , how important is ICB to your work (relative to more specialized journals in your field)?				
			<i>answered question</i>	793
			<i>skipped question</i>	57
			Response Percent	Response Count
Very important			7.9%	63
Somewhat important			56.9%	451
Not important			26.9%	213
Not applicable			8.3%	66

2. If you <u>teach or assist in undergraduate courses</u> , how important is ICB to your teaching (relative to more specialized journals in your field)?				
			<i>answered question</i>	773
			<i>skipped question</i>	77
			Response Percent	Response Count
Very important			2.8%	22
Somewhat important			29.6%	229
Not important			43.2%	334
Not applicable			24.3%	188

3. If you <u>teach graduate courses</u> , how important is ICB to your teaching (relative to more specialized journals in your field)?				
			<i>answered question</i>	754
			<i>skipped question</i>	96
			Response Percent	Response Count
Very important			4.2%	32
Somewhat important			23.2%	175
Not important			19.5%	147
Not applicable			53.1%	400

4. If you <u>are a student member</u> , how important is ICB to your coursework (relative to more specialized journals in your field)?				
			<i>answered question</i>	648
			<i>skipped question</i>	202
			Response Percent	Response Count
Very important			3.9%	25
Somewhat important			21.9%	142
Not important			17.1%	111
Not applicable - I'm not a student member			57.1%	370

5. Have you ever accessed an online version of an ICB article at the Oxford University website?				
			<i>answered question</i>	798
			<i>skipped question</i>	52
			Response Percent	Response Count
Yes			65.2%	520
No			34.8%	278

6. When you use a scientific journal in your research, teaching, or coursework, how important is the ability to download articles in PDF format?				
			<i>answered question</i>	804
			<i>skipped question</i>	46
			Response Percent	Response Count
Very important			96.1%	773
Somewhat important			3.9%	31
Not important			0.0%	0

7. How important is the ability to view articles in HTML format?				
			<i>answered question</i>	804
			<i>skipped question</i>	46
			Response Percent	Response Count
Very important			9.6%	77
Somewhat important			39.6%	318
Not important			50.9%	409

8. How important is the ability to download figures or other graphics (e.g., as TIF, JPG or GIF files) from online journal articles?				
			<i>answered question</i>	797
			<i>skipped question</i>	53
			Response Percent	Response Count
Very important			52.1%	415
Somewhat important			39.0%	311
Not important			8.9%	71

9. How important is the ability do download figures or other graphics as PowerPoint slides from online journal articles?				
			<i>answered question</i>	799
			<i>skipped question</i>	51
			Response Percent	Response Count
Very important			23.5%	188
Somewhat important			39.2%	313
Not important			37.3%	298

10. Although several online journal databases list ICB articles, the journal is not presently archived in PubMed. If you were invited to speak in a SICB symposium, how important would the lack of PubMed listing for ICB be in your decision to participate in the symposium and publish a symposium paper in ICB?				
			<i>answered question</i>	783
			<i>skipped question</i>	67
			Response Percent	Response Count
Very important			7.4%	58
Somewhat important			29.9%	234
Not important			62.7%	491

11. For 2008, ICB had a journal impact factor of 2.74 (up from 2.66 in 2007) and was ranked 9th among 125 zoology journals (up from 11th in 2007). If you were invited to speak in a SICB symposium, how important would ICB's impact factor be in your decision to participate in the symposium and publish a symposium paper in ICB?				
			<i>answered question</i>	783
			<i>skipped question</i>	67
			Response Percent	Response Count
Very important			9.2%	72
Somewhat important			43.3%	339
Not important			47.5%	372

12. Please choose one that best describes your situation to direct you to other parts of this survey.				
			<i>answered question</i>	810
			<i>skipped question</i>	40
			Response Percent	Response Count
A. I organized a SICB symposium during the last 4 years (SICB meetings in 2006-2009). This takes you to page #10.			4.8%	39

B. I did not organize a symposium, but I wrote a SICB symposium paper during the last 4 years (SICB meetings in 2006-2009). This takes you to page #11.	8.0%	65
C. I neither organized a symposium nor contributed a symposium paper to ICB. This takes you to page #12.	87.2%	706

Page: SICB Journal Questions for Symposium Organizers

1. Were the symposium papers published in ICB?		
	<i>answered question</i>	33
	<i>skipped question</i>	817
	Response Percent	Response Count
Yes	84.8%	28
No	15.2%	5

2. If you were a SICB symposium organizer and your symposium papers were not published in ICB, what was the reason?		
	<i>answered question</i>	6
	<i>skipped question</i>	844
	Response Percent	Response Count
Symposium was rejected by the ICB editorial board.	0.0%	0
The symposium contributors did not want to publish in ICB.	16.7%	1
Other (please explain below).	83.3%	5
	Show replies Please add additional comments here.	5

1 Workshop is in January.

2. With regards to answering both questions 1 & 2, yes we did publish some of the symposium papers in ICB, but several authors declined to publish in ICB because they were already contributing manuscripts to another journal (special issue) on similar topics.
3. Educational symposium on the digital library.
4. Lack of interest by most speakers
5. At the time, the journal was transitioning to Oxford. The nature of the symposium, in which non-members from the "NIH" community (as opposed to the "NSF" community) were participated were concerned that ICB was not indexed with PubMed. We published in a journal that was indexed by PubMed and was also sponsored by SICB - JEZ-B. However, we did publish a summary paper about the Symposium in ICB, at the urging of the Editor.

3. How satisfied were you with the publication process in terms of the <u>speed of publication</u>?		
	<i>answered question</i>	28
	<i>skipped question</i>	822
	Response Percent	Response Count
Very satisfied	71.4%	20
Satisfied	28.6%	8
Not very satisfied	0.0%	0
Dissatisfied	0.0%	0
	Please add additional comments here.	0

4. How satisfied were you with the <u>quality of peer review</u>?		
	<i>answered question</i>	28
	<i>skipped question</i>	822
	Response Percent	Response Count
Very satisfied	32.1%	9

Satisfied	64.3%	18
Not very satisfied	0.0%	0
Dissatisfied	3.6%	1
Please add additional comments here.		0

5. How satisfied were you with the <u>interaction with the ICB editorial staff?</u>		
		answered question 28
		skipped question 822
	Response Percent	Response Count
Very satisfied	75.0%	21
Satisfied	17.9%	5
Not very satisfied	3.6%	1
Dissatisfied	3.6%	1
Show replies Please add additional comments here.		1

1. Communication about the timing of deadlines was unclear.

6. How satisfied were you with the <u>editorial quality of the papers as they appeared in print (e.g., formatting; free of typographical errors; quality of figures or images; etc.)?</u>		
		answered question 28
		skipped question 822
	Response Percent	Response Count
Very satisfied	67.9%	19
Satisfied	32.1%	9
Not very satisfied	0.0%	0
Dissatisfied	0.0%	0
Please add additional comments here.		0

Page: SICB Journal Questions for Symposium Contributors

1. Was your symposium paper published in ICB?		
		answered question 81
		skipped question 769
	Response Percent	Response Count
Yes	87.7%	71
No	12.3%	10

2. If your symposium paper was not published in ICB, what was the <u>primary</u> reason?		
		answered question 12
		skipped question 838
	Response Percent	Response Count
My research results were not ready for publication.	25.0%	3
I did not have enough time to prepare a paper by the editor's deadline.	8.3%	1
I did not want to publish in ICB (Please explain below, in comments section)	16.7%	2
Symposium organizers and/or other contributors did not want to publish in ICB.	25.0%	3
My paper was not accepted for publication in ICB.	0.0%	0
Symposium was not accepted for publication in ICB.	0.0%	0

Other reason(s) (please explain below, in comments section).	25.0%	3
	Show replies	Comments: 6

1. Single paper published for entire symposium (individual papers not published)
2. It's this January.
3. I address mostly anthropological questions and publish mostly in anthropological journals.
4. Published in special edition of Zoology, as the organizers chose and facilitated.
5. I was co-author on two symposium papers (but not the presenting author in either). One was published in ICB, and the other was published in a different journal.
6. I have been invited to several SICB symposia in the past few years. In several cases I spoke about material that was already slated for another journal. In these cases I did not contribute a paper.

3. How satisfied were you with the publication process in terms of the <u>speed of publication</u>?		
	<i>answered question</i>	75
	<i>skipped question</i>	775
	Response Percent	Response Count
Very satisfied	53.3%	40
Satisfied	45.3%	34
Not very satisfied	1.3%	1
Dissatisfied	0.0%	0

4. How satisfied were you with the publication process in terms of the <u>quality of peer review</u>?		
	<i>answered question</i>	73
	<i>skipped question</i>	777
	Response Percent	Response Count
Very satisfied	39.7%	29
Satisfied	57.5%	42
Not very satisfied	1.4%	1
Dissatisfied	1.4%	1

5. How satisfied were you with the publication process in terms of the <u>editorial quality of your paper as it appeared in print (e.g., formatting; free of typographical errors; quality of figures or images; etc.)?</u>		
	<i>answered question</i>	75
	<i>skipped question</i>	775
	Response Percent	Response Count
Very satisfied	53.3%	40
Satisfied	44.0%	33
Not very satisfied	0.0%	0
Dissatisfied	2.7%	2

6. How satisfied were you with the publication process in terms of the <u>cost of printing color graphics (i.e., graphs, photographs, diagrams)?</u>		
	<i>answered question</i>	75
	<i>skipped question</i>	775
	Response Percent	Response Count
Very satisfied	28.0%	21
Satisfied	30.7%	23
Not very satisfied	9.3%	7
Dissatisfied	4.0%	3
Not applicable	28.0%	21

Comments:

24. I wish the journal published something other than just symposium proceedings. It is so rare that an issue is at all relevant to what I do. Even having just a few contributed papers per issue would make it much more interesting, in my opinion.

- 26.** In Los Angeles in 1993, I cosponsored a symposium on the teaching of zoology and the freshman year. The all day session was scheduled 1) on the last day, 2) in a room that might seat 20 people, and 3) at another hotel! At my insistence, we moved to a ballroom in the main hotel and I counted no fewer than 100 people in attendance at any given moment during this session on the last day of the meeting. To this day this 1993 symposium remains one of the best attended symposia devoted to teaching that I have seen at any ASZ/SICB meeting since the SAAWOK treasured sessions. The 1993 events get even more interesting. When we proposed this symposium in 1992, the approving committee wanted to make sure that we understood that under no circumstances would the results of the symposium be printed in any society publication. So nothing was printed. Unfortunately, I have seen little deviation from this disappointing support we received in 1993 in regard to education.
- 54.** I'm not a fan of the current journal format, wherein it publishes papers that are simply the written form of the symposium presentations. I'd prefer the more common society journal format, where papers are simply contributed by members and go through a standard editorial process. The current format means you're essentially accepting papers based solely on an abstract.
- 57.** Some answers downplay the role of ICB. This is due to my research interests are quite different than my teaching areas. It is not a reflection on the journal that I don't use it much in my teaching.
- 63.** I'm surprised you didn't ask about satisfaction with the ICB format. The journal is of very little use to me and my students. It should not be restricted to symposium papers. It should be open to submitted articles.
- 64.** The articles in the journal are very high quality and depending on the symposium extremely valuable, but some years the topics don't mesh well with my interests.
- 71.** I think ICB should be delivered by default as digital only. It should be delivered hard copy only to those members who elect to do so.
- 73.** I enjoy the journal ICB, but it rarely includes papers related to my own research interests (vertebrate systematics & conservation) and I do not consider it important for my work. This is partly because of the tradition of publishing symposium papers, and it is not unusual for me to not read a single article in an issue if the symposia are in areas unrelated to my own interests. If this were true for any of the other journals I receive, I would probably cancel them. However, I would not consider canceling my subscription to ICB (though this is mostly because I value my SICB membership so highly), and I do think it is important to continue publishing symposium papers.
- 74.** Although several papers from my symposium were published in ICB, some members of the symposium specifically did not want to publish a paper in the journal because of the perceived low impact factor. There are a few things some journals are doing to raise their impact factor which I think might be interesting for ICB to explore. One is sending emails to authors who are referenced in a new publication that their paper is being referenced there. I think getting ICB on Pubmed could be critically important. Generally, I think the symposia are great and the opportunity to publish a set of focused papers on a subject is a great opportunity.
- 77.** I was very disappointed to find that the article that we submitted to ICB was not indexed in Pubmed. I think this is the #1 issue that the society should address to increase their impact and make the outstanding articles that result from topical symposia more widely available and more widely read. The impact factor would surely go up if these papers were indexed in Pubmed as it is the primary search mode of most scientists.
- 78.** Although I have neither organized nor participated in a symposium in the last 4 years, a critical issue I hear from members and symposium organizers is the issue of indexing ICB in databases and how this affects the ability to draw non/irregular SICB meeting attendees to participate in symposia. In fact, this issue is so significant I feel the society must suspend the ICB first right of refusal for publication of society symposia until all indexing issues are resolved.
- 80.** I'd like more book reviews.
- 82.** Listing ICB in PubMed is probably the most important change from my perspective. I work with biomedical researchers, and it is difficult for me to publish in ICB because the work is unknown within that community.
- 89.** I think you should have an option for membership with no paper copy of the journal (like many other organizations). Given that I can freely access electronic reprints of papers online virtually anywhere in the world, I would prefer this option as I am uncomfortable receiving paper copies given the environmental cost. Additionally, this lower cost could increase student membership as long as the reduced cost is passed on to the members.
- 90.** I appreciate our journal. That is the primary focus of my membership in our society. I especially find helpful the symposia on evolutionary developmental biology, invertebrate zoology, and comparative anatomy and physiology.



SICB 2010 Meeting Program Officer Report WASHINGTON STATE CONVENTION CENTER

**Eduardo Rosa-Molinar
SICB Program Officer**



Meeting registration

FINAL TOTAL AS of 3:30 PM: 1,722!!!!

- **No of abstract submitted: (orals vs. posters): 1,329 total**
- **No of abstracts withdrawn (orals vs. poster): 45 total (32 oral; 13 posters)**
- **Total number of registrations online: 1,574; this is online only; includes fax and regular mail**
- **Companions: 32**
- **Total number of exhibitors: 36 companies**
- **Total number of members (faculty) registered and presenting: 434 members registered**
- **Total number of graduate students registered and presenting: 565 Graduate students registered**
- **Total number of registrations at meeting: 113**

Meeting registration

- Total number of post-doctoral fellows registered and presenting: 188 post docs registered
- Total number of undergraduates registered and presenting: 172 Undergrad students registered
- Total number of high school students registered and presenting: 3 high school students registered
- Student support: 287- housing; 67 - registration